



[Go to Product page](#)

Datasheet for ABIN1310206

## MAP3K14 Protein (AA 1-947) (GST tag)

### 1 Image

#### Overview

Quantity:	10 µg
Target:	MAP3K14
Protein Characteristics:	AA 1-947
Origin:	Human
Source:	Wheat germ
Protein Type:	Recombinant
Purification tag / Conjugate:	This MAP3K14 protein is labelled with GST tag.
Application:	Western Blotting (WB), ELISA, Affinity Purification (AP), Antibody Array (AA)

#### Product Details

Purpose:	MAP3K14 (Human) Recombinant Protein (P01)
Sequence:	<p>MAVMEMACPG APGSAVGQQK ELPKAKEKTP PLGKKQSSVY KLEAVEKSPV FCGKWEILND  VITKGTAKEG SEAGPAAISI IAQAECENSQ EFSPTFSERI FIAGSKQYSQ SESLDQIPNN  VAHATEGKMA RVCWKGKRRS KARKKRKKKS SKSLAHAGVA LAKPLPRTPE QESCTIPVQE  DESPLGAPYV RNTPOFTKPL KEPGLGQLCF KQLGEGLRPA LPRSELHKLI SPLQCLNHVW  KLHHPQDGGP LPLPHTPFY SRLPHPPFFH PLQPWKPHPL ESFLGKLACV DSQKPLPDPH  LSKLACVDSP KPLPGPHLEP SCLSRGAHEK FSVEEYLVA LQGSVSSGQA HSLTSLAKTW  AARGSRREP SPKTEDNEGV LLTEKLPVD YEYREEVHWA THQLRLGRGS FGEVHRMEDK  QTGFQCAVKK VRLEVFRAEE LMACAGLTSP RIVPLYGAVR EGPWVNIFME LLEGGSLGQL  VKEQGCLPED RALYYLGQAL EGLEYLHSRR ILHGDVKADN VLLSSDGS SHA ALCDFGHAVC  LQPDGLGKSL LTGDYIPGTE THMAPEVVLG RSCDAKVDVW SSCMMLHML NGCHPWTQFF  RGPLCLKIAS EPPPVEIPP SCAPLTAQAI QEGLRKEPIH RVSAAELGGK VNRALQQVGG</p>

## Product Details

---

LKSPWRGEYK EPRHPPNQA NYHQTLHAQP RELSPRAPGP RPAEETTGRA PKLQPPLPPE  
PPEPNKSPPL TLSKEESGMW EPLPLSSLEP APARNPSSPE RKATVPEQEL QQLEIELFLN  
SLSQPFSL EE QEILSCLSI DSLSLSDDE KNPSKASQSS RDTLSSGVHS WSSQAEARSS  
SWNMVLARGR PTDTPSYFNG VKVQIQSLNG EHLHIREFHR VKVGDITGI SSQIPAAAFS  
LVTKDGQPV R YDMEVPDSGI DLQCTLAPDG SFAWSWRVKH GQLENRP

Characteristics: Human MAP3K14 full-length ORF ( NP\_003945.2, 1 a.a. - 947 a.a.) recombinant protein with GST-tag at N-terminal.

Purification: in vitro wheat germ expression system

## Target Details

---

Target: MAP3K14

Alternative Name: MAP3K14 ([MAP3K14 Products](#))

Background: Gene: mitogen-activated protein kinase kinase kinase 14  
Synonyms: FTDCR1B, HS, HSNIK, NIK

Gene ID: 9020

NCBI Accession: [NM\\_003954](#)

Pathways: [NF-kappaB Signaling](#), [TCR Signaling](#)

## Application Details

---

Application Notes: Optimal working dilution should be determined by the investigator.

Restrictions: For Research Use only

## Handling

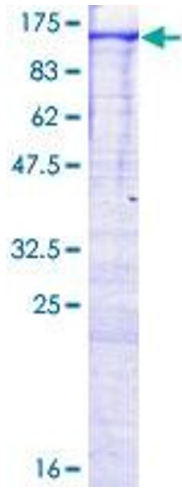
---

Buffer: 50 mM Tris-HCl, 10 mM reduced Glutathione, pH =8.0 in the elution buffer.

Handling Advice: Aliquot to avoid repeated freezing and thawing.

Storage: -80 °C

Storage Comment: Best use within three months from the date of receipt of this protein.



**Image 1.**