



[Go to Product page](#)

Datasheet for ABIN1310250

## MAP4K4 Protein (AA 611-710) (GST tag)

### 1 Image

#### Overview

Quantity:	10 µg
Target:	MAP4K4
Protein Characteristics:	AA 611-710
Origin:	Human
Source:	Wheat germ
Protein Type:	Recombinant
Purification tag / Conjugate:	This MAP4K4 protein is labelled with GST tag.
Application:	ELISA, Western Blotting (WB), Affinity Purification (AP), Antibody Array (AA)

#### Product Details

Purpose:	MAP4K4 (Human) Recombinant Protein (Q01)
Sequence:	VHPALQRPAE PQVQWSHLAS LKNNVSPVSR SHSFSDPSPK FAHHHLRSQD PCPPSRSEVL SQSSDSKSEA PDPTQKAWSR SDSDEVPPRV PVRTTSRSPV
Characteristics:	Human MAP4K4 partial ORF ( NP_663719, 611 a.a. - 710 a.a.) recombinant protein with GST-tag at N-terminal.
Purification:	in vitro wheat germ expression system

#### Target Details

Target:	MAP4K4
Alternative Name:	MAP4K4 ( <a href="#">MAP4K4 Products</a> )

## Target Details

Background:	Full Gene Name: mitogen-activated protein kinase kinase kinase kinase 4 Synonyms: FLH21957,FLJ10410,FLJ20373,FLJ90111,HGK,KIAA0687,NIK
Gene ID:	9448
NCBI Accession:	<a href="#">NM_145686</a>

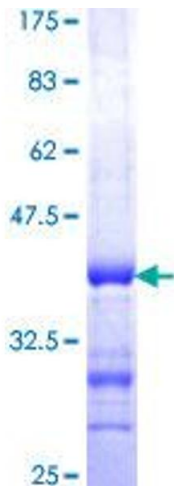
## Application Details

Application Notes:	Optimal working dilution should be determined by the investigator.
Comment:	Preparation method: in vitro, wheat germ expression system Product Quality tested by: 12.5% SDS-PAGE Stained with Coomassie Blue.
Restrictions:	For Research Use only

## Handling

Buffer:	50 mM Tris-HCl, 10 mM reduced Glutathione, pH =8.0 in the elution buffer.
Handling Advice:	Aliquot to avoid repeated freezing and thawing.
Storage:	-80 °C
Storage Comment:	Best use within three months from the date of receipt of this protein.

## Images



**Image 1.**