



[Go to Product page](#)

Datasheet for ABIN1310267

MAPK12 Protein (AA 1-367) (GST tag)

1 Image

Overview

Quantity:	10 µg
Target:	MAPK12
Protein Characteristics:	AA 1-367
Origin:	Human
Source:	Wheat germ
Protein Type:	Recombinant
Purification tag / Conjugate:	This MAPK12 protein is labelled with GST tag.
Application:	Western Blotting (WB), ELISA, Affinity Purification (AP), Antibody Array (AA), Kinase Activity Assay (KAA)

Product Details

Purpose:	MAPK12 (Human) Recombinant Protein (P01)
Sequence:	MSSPPPARSG FYRQEVTKTA WEVRAVYRDL QPVGSGAYGA VCSAVDGRGTG AKVAIKKLYR PFQSELEFAKR AYRELRLLLKH MRHENVIGLL DVFTPDETLD DFTDFYLVMP FMGTDLGKLM KHEKLGEDRI QFLVYQMLKG LRYIHAAGII HRDLKPGNLA VNEDCELEKIL DFGLARQADS EMTGYVVTRW YRAPEVILNW MRYTQTVDIW SVGCIMAEMI TGKTLFKGSD HLDQLKEIMK VTGTPPAEFV QRLQSDEAKN YMKGLPELEK KDFASILTNA SPLAVNLEK MLVLDAEQRV TAGEALAHPY FESLHDEDE PQVQKYDDSF DDVDRTLDEW KRVTYKEVLS FKPPRQLGAR VSKETPL
Characteristics:	Human MAPK12 full-length ORF (AAH15741.1, 1 a.a. - 367 a.a.) recombinant protein with GST-tag at N-terminal.

Product Details

Purification: in vitro wheat germ expression system

Target Details

Target: MAPK12

Alternative Name: MAPK12 ([MAPK12 Products](#))

Background: Full Gene Name: mitogen-activated protein kinase 12
Synonyms: ERK3,ERK6,P38GAMMA,PRKM12,SAPK-3,SAPK3

Gene ID: 6300

Pathways: [MAPK Signaling](#), [Neurotrophin Signaling Pathway](#), [Regulation of Muscle Cell Differentiation](#), [Hepatitis C](#), [BCR Signaling](#), [S100 Proteins](#)

Application Details

Application Notes: Optimal working dilution should be determined by the investigator.

Comment: Preparation method: in vitro, wheat germ expression system
Product Quality tested by: 12.5% SDS-PAGE Stained with Coomassie Blue.

Restrictions: For Research Use only

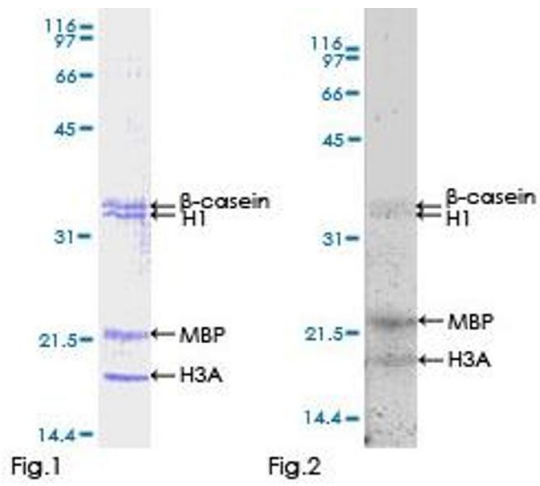
Handling

Buffer: 50 mM Tris-HCl, 10 mM reduced Glutathione, pH =8.0 in the elution buffer.

Handling Advice: Aliquot to avoid repeated freezing and thawing.

Storage: -80 °C

Storage Comment: Best use within three months from the date of receipt of this protein.



Kinase Activity Assay

Image 1.