

Datasheet for ABIN1310269

## MAPK12 Protein (AA 251-367) (GST tag)



[Go to Product page](#)

### 1 Image

#### Overview

Quantity:	10 µg
Target:	MAPK12
Protein Characteristics:	AA 251-367
Origin:	Human
Source:	Wheat germ
Protein Type:	Recombinant
Purification tag / Conjugate:	This MAPK12 protein is labelled with GST tag.
Application:	Western Blotting (WB), ELISA, Affinity Purification (AP), Antibody Array (AA)

#### Product Details

Purpose:	MAPK12 (Human) Recombinant Protein (Q01)
Sequence:	QRLQSDEAKN YMKGLPELEK KDFASILTNA SPLAVNLLK MLVLDAEQRV TAGEALAHPY FESLHDEDE PQVQKYDDSF DDVDRTLDEW KRVTYKEVLS FKPPRQLGAR VSKETPL
Characteristics:	Human MAPK12 partial ORF ( AAH15741, 251 a.a. - 367 a.a.) recombinant protein with GST-tag at N-terminal.
Purification:	in vitro wheat germ expression system

#### Target Details

Target:	MAPK12
Alternative Name:	MAPK12 ( <a href="#">MAPK12 Products</a> )

## Target Details

Background:	Full Gene Name: mitogen-activated protein kinase 12 Synonyms: ERK3,ERK6,P38GAMMA,PRKM12,SAPK-3,SAPK3
Gene ID:	6300
Pathways:	<a href="#">MAPK Signaling</a> , <a href="#">Neurotrophin Signaling Pathway</a> , <a href="#">Regulation of Muscle Cell Differentiation</a> , <a href="#">Hepatitis C</a> , <a href="#">BCR Signaling</a> , <a href="#">S100 Proteins</a>

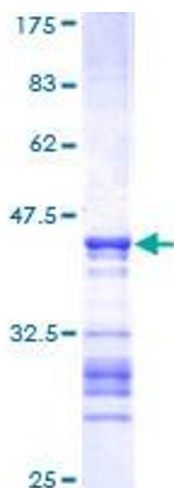
## Application Details

Application Notes:	Optimal working dilution should be determined by the investigator.
Comment:	Preparation method: in vitro, wheat germ expression system Product Quality tested by: 12.5% SDS-PAGE Stained with Coomassie Blue.
Restrictions:	For Research Use only

## Handling

Buffer:	50 mM Tris-HCl, 10 mM reduced Glutathione, pH =8.0 in the elution buffer.
Handling Advice:	Aliquot to avoid repeated freezing and thawing.
Storage:	-80 °C
Storage Comment:	Best use within three months from the date of receipt of this protein.

## Images



**Image 1.**