

Datasheet for ABIN1310283

## MAPK14 Protein (AA 2-100) (GST tag)



[Go to Product page](#)

### 1 Image

#### Overview

Quantity:	10 µg
Target:	MAPK14
Protein Characteristics:	AA 2-100
Origin:	Human
Source:	Wheat germ
Protein Type:	Recombinant
Purification tag / Conjugate:	This MAPK14 protein is labelled with GST tag.
Application:	Western Blotting (WB), ELISA, Affinity Purification (AP), Antibody Array (AA)

#### Product Details

Purpose:	MAPK14 (Human) Recombinant Protein (Q02)
Sequence:	SQERPTFYRQ ELNKTIWEVP ERYQNLSPVG SGAYGSVCAA FDTKTGLRVA VKKLSRPFQS IIHAKRTYRE LRLKHKMKHE NVIGLLDVFT PARSLEEFN
Characteristics:	Human MAPK14 partial ORF ( NP_001306, 2 a.a. - 100 a.a.) recombinant protein with GST-tag at N-terminal.
Purification:	in vitro wheat germ expression system

#### Target Details

Target:	MAPK14
Alternative Name:	MAPK14 ( <a href="#">MAPK14 Products</a> )

## Target Details

Background:	Full Gene Name: mitogen-activated protein kinase 14 Synonyms: CSBP1,CSBP2,CSPB1,EXIP,Mxi2,PRKM14,PRKM15,RK,SAPK2A,p38,p38ALPHA
Gene ID:	1432
NCBI Accession:	<a href="#">NM_001315</a>
Pathways:	<a href="#">MAPK Signaling</a> , <a href="#">Neurotrophin Signaling Pathway</a> , <a href="#">Activation of Innate immune Response</a> , <a href="#">Cellular Response to Molecule of Bacterial Origin</a> , <a href="#">Regulation of Muscle Cell Differentiation</a> , <a href="#">Regulation of Cell Size</a> , <a href="#">Hepatitis C</a> , <a href="#">Toll-Like Receptors Cascades</a> , <a href="#">Autophagy</a> , <a href="#">Thromboxane A2 Receptor Signaling</a> , <a href="#">BCR Signaling</a> , <a href="#">S100 Proteins</a>

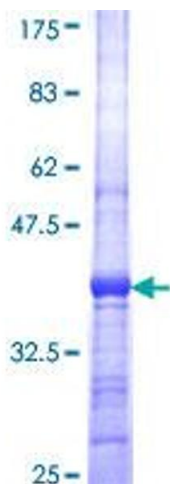
## Application Details

Application Notes:	Optimal working dilution should be determined by the investigator.
Comment:	Preparation method: in vitro, wheat germ expression system Product Quality tested by: 12.5% SDS-PAGE Stained with Coomassie Blue.
Restrictions:	For Research Use only

## Handling

Buffer:	50 mM Tris-HCl, 10 mM reduced Glutathione, pH =8.0 in the elution buffer.
Handling Advice:	Aliquot to avoid repeated freezing and thawing.
Storage:	-80 °C
Storage Comment:	Best use within three months from the date of receipt of this protein.

## Images



**Image 1.**