



[Go to Product page](#)

Datasheet for ABIN1310317

## JNK2 Protein (AA 321-424) (GST tag)

### 1 Image

#### Overview

Quantity:	10 µg
Target:	JNK2 (MAPK9)
Protein Characteristics:	AA 321-424
Origin:	Human
Source:	Wheat germ
Protein Type:	Recombinant
Purification tag / Conjugate:	This JNK2 protein is labelled with GST tag.
Application:	Western Blotting (WB), ELISA, Affinity Purification (AP), Antibody Array (AA)

#### Product Details

Purpose:	MAPK9 (Human) Recombinant Protein (Q01)
Sequence:	ITVWYDPAEA EAPPPQIYDA QLEEREHAIE EWKELIYKEV MDWEERSKNG VVKDQPSDAA VSSNATPSQS SSINDISSMS TEQTLASDTD SSLDASTGPL EGCR
Characteristics:	Human MAPK9 partial ORF ( AAH32539, 321 a.a. - 424 a.a.) recombinant protein with GST-tag at N-terminal.
Purification:	in vitro wheat germ expression system

#### Target Details

Target:	JNK2 (MAPK9)
Alternative Name:	MAPK9 ( <a href="#">MAPK9 Products</a> )

## Target Details

Background:	Full Gene Name: mitogen-activated protein kinase 9 Synonyms: JNK-55, JNK2, JNK2A, JNK2ALPHA, JNK2B, JNK2BETA, PRKM9, SAPK, p54a, p54aSAPK
Gene ID:	5601
Pathways:	<a href="#">MAPK Signaling</a> , <a href="#">WNT Signaling</a> , <a href="#">TLR Signaling</a> , <a href="#">Fc-epsilon Receptor Signaling Pathway</a> , <a href="#">Activation of Innate immune Response</a> , <a href="#">Cellular Response to Molecule of Bacterial Origin</a> , <a href="#">Positive Regulation of Endopeptidase Activity</a> , <a href="#">Hepatitis C</a> , <a href="#">Toll-Like Receptors Cascades</a> , <a href="#">BCR Signaling</a> , <a href="#">S100 Proteins</a>

## Application Details

Application Notes:	Optimal working dilution should be determined by the investigator.
Comment:	Preparation method: in vitro, wheat germ expression system Product Quality tested by: 12.5% SDS-PAGE Stained with Coomassie Blue.
Restrictions:	For Research Use only

## Handling

Buffer:	50 mM Tris-HCl, 10 mM reduced Glutathione, pH =8.0 in the elution buffer.
Handling Advice:	Aliquot to avoid repeated freezing and thawing.
Storage:	-80 °C
Storage Comment:	Best use within three months from the date of receipt of this protein.

## Images

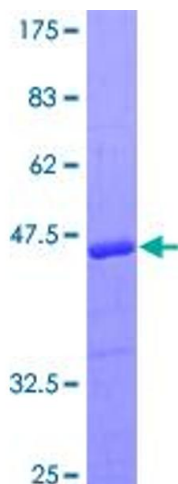


Image 1.