



[Go to Product page](#)

Datasheet for ABIN1310335

MAPKBP1 Protein (AA 1-1015) (GST tag)

1 Image

Overview

Quantity:	2 µg
Target:	MAPKBP1
Protein Characteristics:	AA 1-1015
Origin:	Human
Source:	Wheat germ
Protein Type:	Recombinant
Purification tag / Conjugate:	This MAPKBP1 protein is labelled with GST tag.
Application:	ELISA, Western Blotting (WB), Affinity Purification (AP), Antibody Array (AA)

Product Details

Purpose:	MAPKBP1 (Human) Recombinant Protein (P01)
Sequence:	<p>MGTLRVHELQ SLSEMLKVEA HDSEILCLEY SKPDTGLKLL ASASRDRLIH VLDAGREYSL</p> <p>QQTLDEHSSS ITAVKFAASD GQVRMISCGA DKSIFYRRTAQ KSGDGVQFTR THHVVRKTTL</p> <p>YDMDVPEPSWK YTAIGCQDRN IRIFNISSGK QKKLFGKSQG EDGTLIKVQT DSPGIYIATS</p> <p>CSDKNLSIFD FSSGECVATM FGHSEIVTGM KFSNDCKHLI SVSGDSCIFV WRLSSEMTIS</p> <p>MRQRLAELRQ RQRGGKQQGP SSPQRASGPN RHQAPSMLSP GPALSSDSK EGEDEGTEEE</p> <p>LPALPVLAKS TKKALASVPS PALPRSLSHW EMSRAQESVG FLDSAPAANP GPRRRGRWWQ</p> <p>PGVELSVRSM LDLRQLETLA PSLQDPSQDS LAIIPSGPRK HGQEALETSL TSQNEKPPRP</p> <p>QASQPCSYPH IIRLLSQEEG VFAQDLEPAP IEDGIVYPEP SDNPTMDTSE FQVQAPARGT</p> <p>LGRVYPGSRs SEKHSPDSAC SVDYSSSCLS SPEHPTEDSE STEPLSVDGI SSDLEEPAEG</p> <p>DEEEEEEEGG MGPYGLQEGS PQTPDQEQL KQHFETLASG AAPGAPVQVP ERSESRSISS</p> <p>RFLQVQTRP LREPSPISSSS LALMSRPAQV PQASGEQPRG NGANPPGAPP EVEPSSGNPS</p>

Product Details

PQQAASVLLP RCRLNPDSSW APKRVATASP FSGLQKAQSV HSLVPQERHE ASLQAPSPGA
LLSREIEAQD GLGSLPPADG PPSRPHSYQN PTTSSMAKIS RSISVGENLG LVAEPQAHAP
IRVSPLSKLA LPSRAHLVLD IPKPLPDRPT LAAFSPVTKG RAPGEAEKPG FPVGLGKAHS
TTERWACLGE GTTPKPRTEC QAHPGPSSPC AQLPVSSLF QGPENLQPPP PEKTPNPMEC
TKPGAALSQD SEPAVSLEQC EQLVAELRGS VRQAVRLYHS VAGCKMPSAE QSRIAQLLRD
TFSSVRQELE AVAGAVLSSP GSSPGAVGAE QTQALLEQYS ELLLRAVERR MERKL

Characteristics: Human MAPKBP1 full-length ORF (AAH36660.1, 1 a.a. - 1015 a.a.) recombinant protein with GST-tag at N-terminal.

Purification: in vitro wheat germ expression system

Target Details

Target: MAPKBP1

Alternative Name: MAPKBP1 ([MAPKBP1 Products](#))

Background: Gene: mitogen-activated protein kinase binding protein 1
Synonyms: MGC138851, MGC138852

Gene ID: 23005

Application Details

Application Notes: Optimal working dilution should be determined by the investigator.

Restrictions: For Research Use only

Handling

Buffer: 50 mM Tris-HCl, 10 mM reduced Glutathione, pH =8.0 in the elution buffer.

Handling Advice: Aliquot to avoid repeated freezing and thawing.

Storage: -80 °C

Storage Comment: Best use within three months from the date of receipt of this protein.

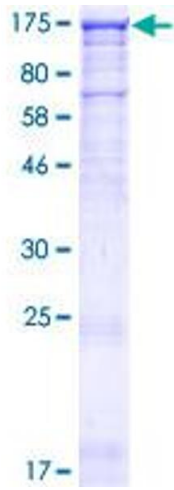


Image 1.