

Datasheet for ABIN1310346

MAPRE3 Protein (AA 1-281) (GST tag)



[Go to Product page](#)

1 Image

Overview

Quantity:	10 µg
Target:	MAPRE3
Protein Characteristics:	AA 1-281
Origin:	Human
Source:	Wheat germ
Protein Type:	Recombinant
Purification tag / Conjugate:	This MAPRE3 protein is labelled with GST tag.
Application:	ELISA, Western Blotting (WB), Affinity Purification (AP), Antibody Array (AA)

Product Details

Purpose:	MAPRE3 (Human) Recombinant Protein (P01)
Sequence:	MAVNVYSTSV TSENLSRHDM LAWVNDLHL NYTKIEQLCS GAAYCQFMDM LFPGCVHLRK VKFQAKLEHE YIHNFKVLQA AFKKGVDKI IPVEKLVKGG FQDNFEFIQW FKKFFDANYD GKDYNPLLAR QGQDVAPPPN PGDQIFNKS KLIQTAVPQR TSPTGPKNMQ TSGRLSNVAP PCILRKNPPS ARNGGHETDA QILELNQQLV DLKLTVDGLE KERDFYFSKL RDIELICQEH ESENSPVISG IIGILYATEE GFAPPEDDEI EEHQQEDQDE Y
Characteristics:	Human MAPRE3 full-length ORF (NP_036458.2, 1 a.a. - 281 a.a.) recombinant protein with GST-tag at N-terminal.
Purification:	in vitro wheat germ expression system

Target Details

Target:	MAPRE3
Alternative Name:	MAPRE3 (MAPRE3 Products)
Background:	Full Gene Name: microtubule-associated protein, RP/EB family, member 3 Synonyms: EB3,EBF3,EBF3-S,RP3
Gene ID:	22924
NCBI Accession:	NM_012326

Application Details

Application Notes:	Optimal working dilution should be determined by the investigator.
Comment:	Preparation method: in vitro, wheat germ expression system Product Quality tested by: 12.5% SDS-PAGE Stained with Coomassie Blue.
Restrictions:	For Research Use only

Handling

Buffer:	50 mM Tris-HCl, 10 mM reduced Glutathione, pH =8.0 in the elution buffer.
Handling Advice:	Aliquot to avoid repeated freezing and thawing.
Storage:	-80 °C
Storage Comment:	Best use within three months from the date of receipt of this protein.

Images

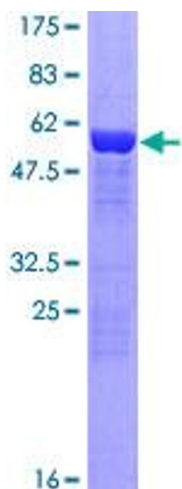


Image 1.