

Datasheet for ABIN1310381

MARCH9 Protein (AA 1-233) (GST tag)[Go to Product page](#)**1** Image

Overview

Quantity:	10 µg
Target:	MARCH9
Protein Characteristics:	AA 1-233
Origin:	Human
Source:	Wheat germ
Protein Type:	Recombinant
Purification tag / Conjugate:	This MARCH9 protein is labelled with GST tag.
Application:	ELISA, Western Blotting (WB), Affinity Purification (AP), Antibody Array (AA)

Product Details

Purpose:	MARCH9 (Human) Recombinant Protein (P01)
Sequence:	MVSDKCHILD LIKAQRRQML ILPEGFREGS WSTLLFRATH HLALHPFLGL FGALSPTQWQ AISLTVIEKV QIAAIVLGS LFLVASISWLI WSSLSPSAKW QRQDLLFQIC YGMYGFMDVV CIGLIIHEGS SVYRIFKRWQ AVNHQWKVLN YDKTKDIGGD AGGGTAGKSG PRNSRTGPTS GATSRPPAAQ RMRPLLQRC GYTILHLLGQ LRPPDARSSS HSGREVMRV TTV
Characteristics:	Human MARCH9 full-length ORF (AAH09489.1, 1 a.a. - 233 a.a.) recombinant protein with GST-tag at N-terminal.
Purification:	in vitro wheat germ expression system

Target Details

Target:	MARCH9
---------	--------

Target Details

Alternative Name:	MARCH9 (MARCH9 Products)
Background:	Full Gene Name: membrane-associated ring finger (C3HC4) 9 Synonyms: FLJ36578,MARCH-IX,RNF179
Gene ID:	92979

Application Details

Application Notes:	Optimal working dilution should be determined by the investigator.
Comment:	Preparation method: in vitro, wheat germ expression system Product Quality tested by: 12.5% SDS-PAGE Stained with Coomassie Blue.
Restrictions:	For Research Use only

Handling

Buffer:	50 mM Tris-HCl, 10 mM reduced Glutathione, pH =8.0 in the elution buffer.
Handling Advice:	Aliquot to avoid repeated freezing and thawing.
Storage:	-80 °C
Storage Comment:	Best use within three months from the date of receipt of this protein.

Images

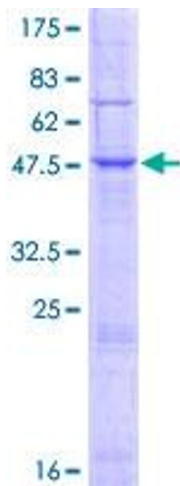


Image 1.