



[Go to Product page](#)

Datasheet for ABIN1310412

## MARVELD3 Protein (AA 1-401) (GST tag)

### 1 Image

#### Overview

Quantity:	25 µg
Target:	MARVELD3
Protein Characteristics:	AA 1-401
Origin:	Human
Source:	Wheat germ
Protein Type:	Recombinant
Purification tag / Conjugate:	This MARVELD3 protein is labelled with GST tag.
Application:	ELISA, Western Blotting (WB), Affinity Purification (AP), Antibody Array (AA)

#### Product Details

Purpose:	MARVELD3 (Human) Recombinant Protein (P01)
Sequence:	MEDPSGAREP RARPRERDPG RRRHPDQGRTHDRPRDRPGD PRRKRSSDGN RRRDGDRDPK RDQERDGNRD RNRDRERERE RERDPDRGPR RDTHRDAGPR AGEHGVWEKP QSRTRDGAR GLTWDAAPP GPAPWEAPEP PQPQRKGDGP RRRPESEPPS ERYLPSTPRP GREEVEYYQS EAEGLLLECHK CKYLCTGRAC CQMLEVLLNL LILACSSVSY SSTGGYTGIT SLGGIYYYQF GGAYSGFDGA DGEKAQLDV QFYQLKLP MV TVAMACSGAL TALCCLFVAM GVL RVPWHCP LLLVTGELL MLIAGGYIPA LYFYFHLYSA AYGSPVCKER QALYQSKGYS GFGCSFHGAD IGAGIFAALG IVVFALGAVL AIKGYRKVRK LKEKPAEMFE F
Characteristics:	Human MARVELD3 full-length ORF ( AAH13376.1, 1 a.a. - 401 a.a.) recombinant protein with GST-tag at N-terminal.
Purification:	in vitro wheat germ expression system

## Target Details

Target:	MARVELD3
Alternative Name:	MARVELD3 ( <a href="#">MARVELD3 Products</a> )
Background:	Full Gene Name: MARVEL domain containing 3 Synonyms: FLJ32280,MARVD3,MRVLDC3
Gene ID:	91862
Pathways:	<a href="#">Cell-Cell Junction Organization</a>

## Application Details

Application Notes:	Optimal working dilution should be determined by the investigator.
Comment:	Preparation method: in vitro, wheat germ expression system Product Quality tested by: 12.5% SDS-PAGE Stained with Coomassie Blue.
Restrictions:	For Research Use only

## Handling

Buffer:	50 mM Tris-HCl, 10 mM reduced Glutathione, pH =8.0 in the elution buffer.
Handling Advice:	Aliquot to avoid repeated freezing and thawing.
Storage:	-80 °C
Storage Comment:	Best use within three months from the date of receipt of this protein.

## Images

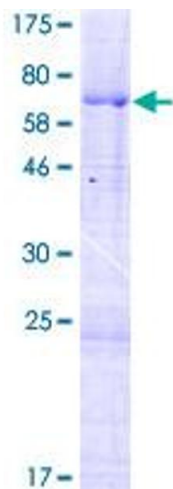


Image 1.