



[Go to Product page](#)

Datasheet for ABIN1310422

## MAST2 Protein (AA 688-792) (GST tag)

### 1 Image

#### Overview

Quantity:	10 µg
Target:	MAST2
Protein Characteristics:	AA 688-792
Origin:	Human
Source:	Wheat germ
Protein Type:	Recombinant
Purification tag / Conjugate:	This MAST2 protein is labelled with GST tag.
Application:	Western Blotting (WB), Affinity Purification (AP), Antibody Array (AA), ELISA

#### Product Details

Purpose:	MAST2 (Human) Recombinant Protein (Q01)
Sequence:	SASATALSLL IPSEHHTCSP LASPMSPHSQ SSNPSSRDSS PRSMASPCGP FASTWVTPMS TPCTIWCWTW RMEVRPVRQG FVKVTSSPMS MGNLCMAWCT RRWWS
Characteristics:	Human MAST2 partial ORF ( AAH15816, 688 a.a. - 792 a.a.) recombinant protein with GST-tag at N-terminal.
Purification:	in vitro wheat germ expression system

#### Target Details

Target:	MAST2
Alternative Name:	MAST2 ( <a href="#">MAST2 Products</a> )

## Target Details

---

Background:	Gene: microtubule associated serine/threonine kinase 2 Synonyms: FLJ39200, KIAA0807, MAST205, MTSSK, RP4-533D7.1
Gene ID:	23139

---

## Application Details

---

Application Notes:	Optimal working dilution should be determined by the investigator.
Restrictions:	For Research Use only

---

## Handling

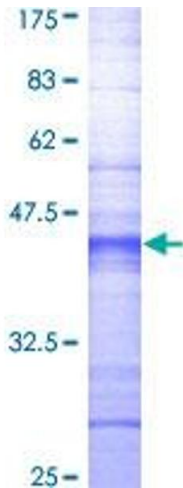
---

Buffer:	50 mM Tris-HCl, 10 mM reduced Glutathione, pH =8.0 in the elution buffer.
Handling Advice:	Aliquot to avoid repeated freezing and thawing.
Storage:	-80 °C
Storage Comment:	Best use within three months from the date of receipt of this protein.

---

## Images

---



**Image 1.**