



[Go to Product page](#)

Datasheet for ABIN1310426

MAST4 Protein (AA 1-250) (GST tag)

1 Image

Overview

Quantity:	10 µg
Target:	MAST4
Protein Characteristics:	AA 1-250
Origin:	Human
Source:	Wheat germ
Protein Type:	Recombinant
Purification tag / Conjugate:	This MAST4 protein is labelled with GST tag.
Application:	Affinity Purification (AP), Antibody Array (AA), ELISA, Western Blotting (WB)

Product Details

Purpose:	MAST4 (Human) Recombinant Protein (P01)
Sequence:	MGEKVSEAPE PVPRGCSGHG SRTPASALVA ASSPGASSAE SSSGSETLSE EGEPGGFSRE HQPPPPPLG GTLGARAPAA WAPASVLLER GVLALPPPLP GGAVPPAPRG SSASQEEQDE ELDHILSPPP MPFRKCSNPD VASGPGKSLK YKRQLEDGR QLRRGSLGGA LTGRYLLPNP VAGQAWPASA ETSNLVRMRS QALGQSAPSL TASLKELSLP RRGSLIDSQK WNCLVKRPVC PNAGRTSPLG
Characteristics:	Human MAST4 full-length ORF (NP_942123.1, 1 a.a. - 250 a.a.) recombinant protein with GST-tag at N-terminal.
Purification:	in vitro wheat germ expression system

Target Details

Target:	MAST4
Alternative Name:	MAST4 (MAST4 Products)
Background:	Full Gene Name: microtubule associated serine/threonine kinase family member 4 Synonyms: DKFZp686E18148,DKFZp686N1467,FLJ16540,FLJ33039,KIAA0303
Gene ID:	375449
NCBI Accession:	NM_198828

Application Details

Application Notes:	Optimal working dilution should be determined by the investigator.
Comment:	Preparation method: in vitro, wheat germ expression system Product Quality tested by: 12.5% SDS-PAGE Stained with Coomassie Blue.
Restrictions:	For Research Use only

Handling

Buffer:	50 mM Tris-HCl, 10 mM reduced Glutathione, pH =8.0 in the elution buffer.
Handling Advice:	Aliquot to avoid repeated freezing and thawing.
Storage:	-80 °C
Storage Comment:	Best use within three months from the date of receipt of this protein.

Images

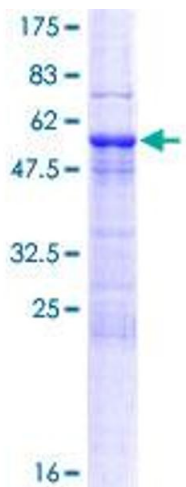


Image 1.