



Datasheet for ABIN1310434
MAT1A Protein (AA 1-395) (GST tag)



[Go to Product page](#)

1 Image

Overview

Quantity:	10 µg
Target:	MAT1A
Protein Characteristics:	AA 1-395
Origin:	Human
Source:	Wheat germ
Protein Type:	Recombinant
Purification tag / Conjugate:	This MAT1A protein is labelled with GST tag.
Application:	Western Blotting (WB), ELISA, Affinity Purification (AP), Antibody Array (AA)

Product Details

Purpose:	MAT1A (Human) Recombinant Protein (P01)
Sequence:	MNGPVDGLCD HSLSEGVFMF TSESVGEGHP DKICDQISDA VLDAHLKQDP NAKVACETVC KTGMLVLLCGE ITSMAMVDYQ RVVVRTIKHI GYDDSAKGFDFKTCNVLVAL EQQSPDIAQC VHLDRNEEDV GAGDQGLMFG YATDETEECM PLTIILAHKL NARMADLRSS GLLPWLRPDS KTQVTVQYMQ DNGAVIPVRI HTIVISVQHN EDITLEEMRR ALKEQVIRAV VPAKYLDEDT VYHLQPSGRF VIGGPQGDAG VTGRKIIVDT YGGWGAHGGG AFSGKDYTKV DRSAAYAARW VAKSLVKAGL CRRVLVQVSY AIGVAEPLSI SIFTYGTSSQK TERELLDVVH KNFDLRPGVI VRDLDLKKPI YQKTACYGHF GRSEFPWEVP RKLVF
Characteristics:	Human MAT1A full-length ORF (AAH18359, 1 a.a. - 395 a.a.) recombinant protein with GST-tag at N-terminal.
Purification:	in vitro wheat germ expression system

Target Details

Target:	MAT1A
Alternative Name:	MAT1A (MAT1A Products)
Background:	Full Gene Name: methionine adenosyltransferase I, alpha Synonyms: MAT,MATA1,SAMS,SAMS1
Gene ID:	4143
Pathways:	Mitotic G1-G1/S Phases , M Phase , Ribonucleoside Biosynthetic Process , Methionine Biosynthetic Process

Application Details

Application Notes:	Optimal working dilution should be determined by the investigator.
Comment:	Preparation method: in vitro, wheat germ expression system Product Quality tested by: 12.5% SDS-PAGE Stained with Coomassie Blue.
Restrictions:	For Research Use only

Handling

Buffer:	50 mM Tris-HCl, 10 mM reduced Glutathione, pH =8.0 in the elution buffer.
Handling Advice:	Aliquot to avoid repeated freezing and thawing.
Storage:	-80 °C
Storage Comment:	Best use within three months from the date of receipt of this protein.

Images

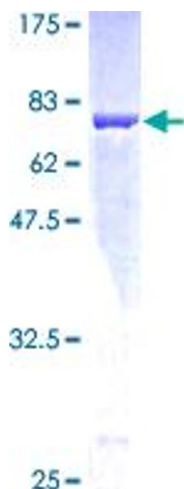


Image 1.