

Datasheet for ABIN1310449

MATN2 Protein (AA 539-648) (GST tag)



[Go to Product page](#)

1 Image

Overview

Quantity:	10 µg
Target:	MATN2
Protein Characteristics:	AA 539-648
Origin:	Human
Source:	Wheat germ
Protein Type:	Recombinant
Purification tag / Conjugate:	This MATN2 protein is labelled with GST tag.
Application:	Western Blotting (WB), ELISA, Affinity Purification (AP), Antibody Array (AA)

Product Details

Purpose:	MATN2 (Human) Recombinant Protein (Q01)
Sequence:	SCVSSSEDSFV CQCFEGYILR EDGKTCRRKD VCQAIDHGCE HICVNSDDSY TCECLEGFRL AEDGKRCRRK DVCKSTHHGC EHICVNNNGNS YICKCSEGFV LAEDGRRCKK
Characteristics:	Human MATN2 partial ORF (NP_085072, 539 a.a. - 648 a.a.) recombinant protein with GST-tag at N-terminal.
Purification:	in vitro wheat germ expression system

Target Details

Target:	MATN2
Alternative Name:	MATN2 (MATN2 Products)

Target Details

Background: Full Gene Name: *matrilin 2*
Synonyms:

Gene ID: 4147

NCBI Accession: [NM_030583](#)

Application Details

Application Notes: Optimal working dilution should be determined by the investigator.

Comment: Preparation method: in vitro, wheat germ expression system
Product Quality tested by: 12.5% SDS-PAGE Stained with Coomassie Blue.

Restrictions: For Research Use only

Handling

Buffer: 50 mM Tris-HCl, 10 mM reduced Glutathione, pH =8.0 in the elution buffer.

Handling Advice: Aliquot to avoid repeated freezing and thawing.

Storage: -80 °C

Storage Comment: Best use within three months from the date of receipt of this protein.

Images

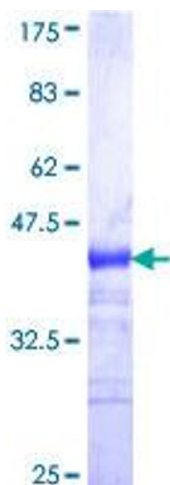


Image 1.