



[Go to Product page](#)

Datasheet for ABIN1310505

## MC1 Receptor Protein (AA 1-100) (GST tag)

### 1 Image

#### Overview

Quantity:	10 µg
Target:	MC1 Receptor (MC1R)
Protein Characteristics:	AA 1-100
Origin:	Human
Source:	Wheat germ
Protein Type:	Recombinant
Purification tag / Conjugate:	This MC1 Receptor protein is labelled with GST tag.
Application:	ELISA, Western Blotting (WB), Affinity Purification (AP), Antibody Array (AA)

#### Product Details

Purpose:	MC1R (Human) Recombinant Protein (Q01)
Sequence:	MAVQGSQRRL LGSLNSTPTA IPQLGLAANQ TGARCLEVSI SDGLFSLGL VSLVENALVV ATIAKNRNLH SPMYCFICCL ALSDLLVSGS NVLETAVILL
Characteristics:	Human MC1R partial ORF ( AAH07856, 1 a.a. - 100 a.a.) recombinant protein with GST-tag at N-terminal.
Purification:	in vitro wheat germ expression system

#### Target Details

Target:	MC1 Receptor (MC1R)
Alternative Name:	MC1R ( <a href="#">MC1R Products</a> )

## Target Details

Background:	Full Gene Name: melanocortin 1 receptor (alpha melanocyte stimulating hormone receptor) Synonyms: MGC14337,MSH-R,SHEP2
Gene ID:	4157
Pathways:	<a href="#">cAMP Metabolic Process</a> , <a href="#">Feeding Behaviour</a>

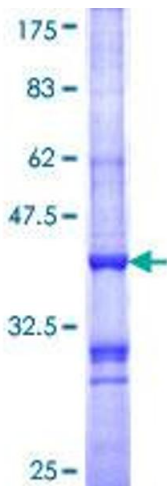
## Application Details

Application Notes:	Optimal working dilution should be determined by the investigator.
Comment:	Preparation method: in vitro, wheat germ expression system Product Quality tested by: 12.5% SDS-PAGE Stained with Coomassie Blue.
Restrictions:	For Research Use only

## Handling

Buffer:	50 mM Tris-HCl, 10 mM reduced Glutathione, pH =8.0 in the elution buffer.
Handling Advice:	Aliquot to avoid repeated freezing and thawing.
Storage:	-80 °C
Storage Comment:	Best use within three months from the date of receipt of this protein.

## Images



**Image 1.**