



[Go to Product page](#)

Datasheet for ABIN1310531
MCCC2 Protein (AA 1-563) (GST tag)

1 Image

Overview

Quantity:	10 µg
Target:	MCCC2
Protein Characteristics:	AA 1-563
Origin:	Human
Source:	Wheat germ
Protein Type:	Recombinant
Purification tag / Conjugate:	This MCCC2 protein is labelled with GST tag.
Application:	Western Blotting (WB), ELISA, Affinity Purification (AP), Antibody Array (AA)

Product Details

Purpose:	MCCC2 (Human) Recombinant Protein (P01)
Sequence:	MWAVLRLALR PCARASPAGP RAYHGDSVAS LGTQPDLGSA LYQENYQMK ALVNQLHERV EHIKLGGEK ARALHISRK LPRERIDNL IDPGSPFLEL SQFAGYQLYD NEEVPGGGII TGIGRVSGVE CMIIANDATV KGGAYYPVTV KKQLRAQEIA MQNRLPCIYL VDSGGAYLPR QADVFPDRDH FGRTFYNQAI MSSKNIAQIA VVMGSCTAGG AYPVAMADEN IIVRKQGTIF LAGPPLVAAA TGEEVSAEDL GGADLHCRKS GVSDHWALDD HHALHLTRKV VRNLNYQKKL DVTIEPSEEP LPADELYGI VGANLKRSFD VREVIARIVD GSRFTEFKAF YGDTLVTGFA RIFGYPVGIV GNNGVLFSES AKKGTHFVQL CCQRNIPLLF LQNITGFMVG REYEAEIGIAK DGAKMVAAVA CAQVPKITLI IGGSYGAGNY GMCGRAYSPR FLYIWPNARI SVMGGEQAAN VLATITKDQR AREGKQFSSA DEAALKEPII KKFEEEGNPY YSSARVWDDG IIDPADTRLV LGLSFSAAALN APIEKTDFGI FRM
Characteristics:	Human MCCC2 full-length ORF (NP_071415.1, 1 a.a. - 563 a.a.) recombinant protein with GST-

Product Details

tag at N-terminal.

Purification: in vitro wheat germ expression system

Target Details

Target: MCCC2

Alternative Name: MCCC2 ([MCCC2 Products](#))

Background: Full Gene Name: methylcrotonoyl-Coenzyme A carboxylase 2 (beta)
Synonyms: MCCB

Gene ID: 64087

NCBI Accession: [NM_022132](#)

Application Details

Application Notes: Optimal working dilution should be determined by the investigator.

Comment: Preparation method: in vitro, wheat germ expression system
Product Quality tested by: 12.5% SDS-PAGE Stained with Coomassie Blue.

Restrictions: For Research Use only

Handling

Buffer: 50 mM Tris-HCl, 10 mM reduced Glutathione, pH =8.0 in the elution buffer.

Handling Advice: Aliquot to avoid repeated freezing and thawing.

Storage: -80 °C

Storage Comment: Best use within three months from the date of receipt of this protein.

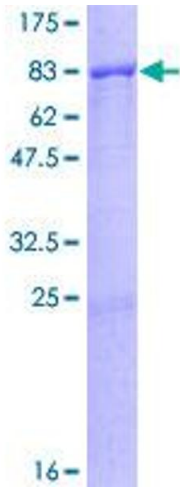


Image 1.