



[Go to Product page](#)

Datasheet for ABIN1310535

MCEE Protein (AA 1-176) (GST tag)

1 Image

Overview

Quantity:	25 µg
Target:	MCEE
Protein Characteristics:	AA 1-176
Origin:	Human
Source:	Wheat germ
Protein Type:	Recombinant
Purification tag / Conjugate:	This MCEE protein is labelled with GST tag.
Application:	Western Blotting (WB), ELISA, Affinity Purification (AP), Antibody Array (AA)

Product Details

Purpose:	MCEE (Human) Recombinant Protein (P01)
Sequence:	MARVLKAAAA NAVGLFSRLQ APIPTVRASS TSQPLDQVTG SVWNLGRLNH VAIAVPDLEK AAAFYKNILG AQVSEAVPLP EHGVSVVFVN LGNTKMELLH PLGLDSPIAG FLQKNKAGGM HHICIEVDNI NAAVMDLKKK KIRSLSEEVK IGAHGKPVIF LHPKDCGGVL VELEQA
Characteristics:	Human MCEE full-length ORF (NP_115990.2, 1 a.a. - 176 a.a.) recombinant protein with GST-tag at N-terminal.
Purification:	in vitro wheat germ expression system

Target Details

Target:	MCEE
Alternative Name:	MCEE (MCEE Products)

Target Details

Background: Full Gene Name: methylmalonyl CoA epimerase
Synonyms: GLOD2

Gene ID: 84693

NCBI Accession: [NM_032601](#)

Pathways: [Monocarboxylic Acid Catabolic Process](#)

Application Details

Application Notes: Optimal working dilution should be determined by the investigator.

Comment: Preparation method: in vitro, wheat germ expression system
Product Quality tested by: 12.5% SDS-PAGE Stained with Coomassie Blue.

Restrictions: For Research Use only

Handling

Buffer: 50 mM Tris-HCl, 10 mM reduced Glutathione, pH =8.0 in the elution buffer.

Handling Advice: Aliquot to avoid repeated freezing and thawing.

Storage: -80 °C

Storage Comment: Best use within three months from the date of receipt of this protein.

Images

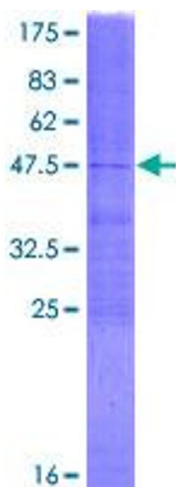


Image 1.