



[Go to Product page](#)

Datasheet for ABIN1310544

MCHR1 Protein (AA 14-113) (GST tag)

1 Image

Overview

Quantity:	10 µg
Target:	MCHR1
Protein Characteristics:	AA 14-113
Origin:	Human
Source:	Wheat germ
Protein Type:	Recombinant
Purification tag / Conjugate:	This MCHR1 protein is labelled with GST tag.
Application:	Western Blotting (WB), ELISA, Affinity Purification (AP), Antibody Array (AA)

Product Details

Purpose:	GPR24 (Human) Recombinant Protein (Q01)
Sequence:	VGLGGGSGCQ ATEEDPLPDC GACAPGQGGR RWRLPQPAWV EGSSARLWEQ ATGTGWMDLE ASLLPTGPNA SNTSDGPDNL TSAGSPPRTG SISYINIIMP
Characteristics:	Human GPR24 partial ORF (AAH01736, 14 a.a. - 113 a.a.) recombinant protein with GST-tag at N-terminal.
Purification:	in vitro wheat germ expression system

Target Details

Target:	MCHR1
Alternative Name:	MCHR1 (MCHR1 Products)

Target Details

Background:	Full Gene Name: melanin-concentrating hormone receptor 1 Synonyms: GPR24,MCH1R,MGC32129,SLC1
Gene ID:	2847
Pathways:	Feeding Behaviour

Application Details

Application Notes:	Optimal working dilution should be determined by the investigator.
Comment:	Preparation method: in vitro, wheat germ expression system Product Quality tested by: 12.5% SDS-PAGE Stained with Coomassie Blue.
Restrictions:	For Research Use only

Handling

Buffer:	50 mM Tris-HCl, 10 mM reduced Glutathione, pH =8.0 in the elution buffer.
Handling Advice:	Aliquot to avoid repeated freezing and thawing.
Storage:	-80 °C
Storage Comment:	Best use within three months from the date of receipt of this protein.

Images

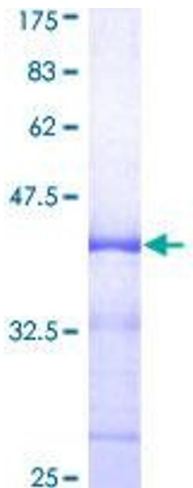


Image 1.