



[Go to Product page](#)

Datasheet for ABIN1310555

MCM4 Protein (AA 267-366) (GST tag)

1 Image

Overview

Quantity:	10 µg
Target:	MCM4
Protein Characteristics:	AA 267-366
Origin:	Human
Source:	Wheat germ
Protein Type:	Recombinant
Purification tag / Conjugate:	This MCM4 protein is labelled with GST tag.
Application:	ELISA, Western Blotting (WB), Affinity Purification (AP), Antibody Array (AA)

Product Details

Purpose:	MCM4 (Human) Recombinant Protein (Q01)
Sequence:	KTKNMRNLNP EDIDQLITIS GMVIRTSQLI PEMQEAFQVC QVCAHTTRVE MDRGRIAEPS VCGRCHTTTHS MALIHNRSFLF SDKQMIKLQE SPEDMPAGQT
Characteristics:	Human MCM4 partial ORF (AAH31061, 267 a.a. - 366 a.a.) recombinant protein with GST-tag at N-terminal.
Purification:	in vitro wheat germ expression system

Target Details

Target:	MCM4
Alternative Name:	MCM4 (MCM4 Products)

Target Details

Background:	Full Gene Name: minichromosome maintenance complex component 4 Synonyms: CDC21,CDC54,MGC33310,P1-CDC21,hCdc21
Gene ID:	4173
Pathways:	DNA Damage Repair , Mitotic G1-G1/S Phases , DNA Replication , Chromatin Binding , Synthesis of DNA

Application Details

Application Notes:	Optimal working dilution should be determined by the investigator.
Comment:	Preparation method: in vitro, wheat germ expression system Product Quality tested by: 12.5% SDS-PAGE Stained with Coomassie Blue.
Restrictions:	For Research Use only

Handling

Buffer:	50 mM Tris-HCl, 10 mM reduced Glutathione, pH =8.0 in the elution buffer.
Handling Advice:	Aliquot to avoid repeated freezing and thawing.
Storage:	-80 °C
Storage Comment:	Best use within three months from the date of receipt of this protein.

Images

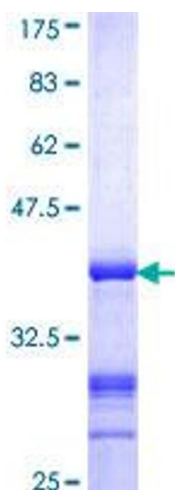


Image 1.