

Datasheet for ABIN1310561  
**MCM6 Protein (AA 2-110) (GST tag)**



[Go to Product page](#)

1 Image

Overview

Quantity:	10 µg
Target:	MCM6
Protein Characteristics:	AA 2-110
Origin:	Human
Source:	Wheat germ
Protein Type:	Recombinant
Purification tag / Conjugate:	This MCM6 protein is labelled with GST tag.
Application:	ELISA, Western Blotting (WB), Affinity Purification (AP), Antibody Array (AA)

Product Details

Purpose:	MCM6 (Human) Recombinant Protein (Q01)
Sequence:	DLAAAAEPGA GSQHLEVRDE VAEKCQKLFLLDFLEEFQSSD GEIKYLQLAE ELIRPERNTL VVSFVDLEQF NQQLSTTIQE EFYRVYPYLC RALKTFVKDR KEIPLAKDF
Characteristics:	Human MCM6 partial ORF ( NP_005906, 2 a.a. - 110 a.a.) recombinant protein with GST-tag at N-terminal.
Purification:	in vitro wheat germ expression system

Target Details

Target:	MCM6
Alternative Name:	MCM6 ( <a href="#">MCM6 Products</a> )

## Target Details

Background:	Full Gene Name: minichromosome maintenance complex component 6 Synonyms: MCG40308,Mis5,P105MCM
Gene ID:	4175
NCBI Accession:	<a href="#">NM_005915</a>
Pathways:	<a href="#">DNA Damage Repair</a> , <a href="#">Mitotic G1-G1/S Phases</a> , <a href="#">DNA Replication</a> , <a href="#">Synthesis of DNA</a>

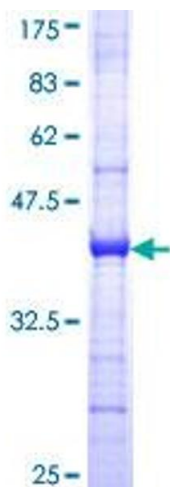
## Application Details

Application Notes:	Optimal working dilution should be determined by the investigator.
Comment:	Preparation method: in vitro, wheat germ expression system Product Quality tested by: 12.5% SDS-PAGE Stained with Coomassie Blue.
Restrictions:	For Research Use only

## Handling

Buffer:	50 mM Tris-HCl, 10 mM reduced Glutathione, pH =8.0 in the elution buffer.
Handling Advice:	Aliquot to avoid repeated freezing and thawing.
Storage:	-80 °C
Storage Comment:	Best use within three months from the date of receipt of this protein.

## Images



**Image 1.**