



[Go to Product page](#)

Datasheet for ABIN1310567

## MCM9 Protein (AA 1-100) (GST tag)

### 1 Image

#### Overview

Quantity:	10 µg
Target:	MCM9
Protein Characteristics:	AA 1-100
Origin:	Human
Source:	Wheat germ
Protein Type:	Recombinant
Purification tag / Conjugate:	This MCM9 protein is labelled with GST tag.
Application:	ELISA, Western Blotting (WB), Affinity Purification (AP), Antibody Array (AA)

#### Product Details

Purpose:	MCMDC1 (Human) Recombinant Protein (Q01)
Sequence:	MNSDQVTLVG QVFESYVSEY HKNDILLILK ERDEDAHYPV VVNAMTLFET NMEIGEYFNM FPSEVLTIFD SALRRSALTI LQSLSQPEAV SMKQNLHARI
Characteristics:	Human MCMDC1 partial ORF ( AAH31658, 1 a.a. - 100 a.a.) recombinant protein with GST-tag at N-terminal.
Purification:	in vitro wheat germ expression system

#### Target Details

Target:	MCM9
Alternative Name:	MCM9 ( <a href="#">MCM9 Products</a> )

## Target Details

Background:	Full Gene Name: minichromosome maintenance complex component 9 Synonyms: C6orf61,FLJ13942,FLJ20170,FLJ56845,MCMDC1,MGC35304,dJ329L24.1,dJ329L24.3
Gene ID:	254394

## Application Details

Application Notes:	Optimal working dilution should be determined by the investigator.
Comment:	Preparation method: in vitro, wheat germ expression system Product Quality tested by: 12.5% SDS-PAGE Stained with Coomassie Blue.
Restrictions:	For Research Use only

## Handling

Buffer:	50 mM Tris-HCl, 10 mM reduced Glutathione, pH =8.0 in the elution buffer.
Handling Advice:	Aliquot to avoid repeated freezing and thawing.
Storage:	-80 °C
Storage Comment:	Best use within three months from the date of receipt of this protein.

## Images

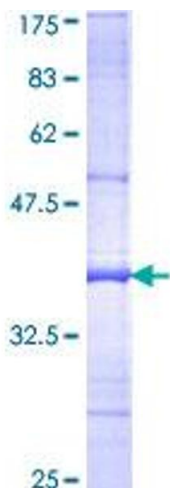


Image 1.