

Datasheet for ABIN1310575  
**MCRS1 Protein (AA 1-462) (GST tag)**



[Go to Product page](#)

1 Image

## Overview

Quantity:	10 µg
Target:	MCRS1
Protein Characteristics:	AA 1-462
Origin:	Human
Source:	Wheat germ
Protein Type:	Recombinant
Purification tag / Conjugate:	This MCRS1 protein is labelled with GST tag.
Application:	ELISA, Western Blotting (WB), Affinity Purification (AP), Antibody Array (AA)

## Product Details

Purpose:	MCRS1 (Human) Recombinant Protein (P01)
Sequence:	MDKDSQGLLD SSLMASGTAS RSEDEESLAG QKRASSQALG TIPKRRSSSR FIKRKKFDDE LVESSLAKSS TRAKGASGVE PGRCSGSEPS SSEKKKVSKA PSTPVPPSPA PAPGLTKRVK KSKQPLQVTK DLGRWKPADD LLLINAVLQT NDLTSVHLGV KFSCRFTLRE VQERWYALLY DPVSKLACQ AMRQLHPEAI AAIQSKALFS KAEEQLLSKV GSTSQPTLET FQDLLHRHPD AFYLARTAKA LQAHWQLMKQ YYLLEDQTVQ PLPKGQQLN FSDAEDLIDD SKLKDMRDEV LEHELMVADR RQKREIRQLE QELHKWQVLV DSITGMSSPD FDNQTLAVLR GRMVRVLMRS REITLGRATK DNQIDVDLSL EGPAWKISRK QGVIKLKNNG DFFIANEGRR PIYIDGRPVL CGSKWRLSNN SVVEIASLRF VFLINQDLIA LIRAEAAKIT PQ
Characteristics:	Human MCRS1 full-length ORF ( NP_006328.2, 1 a.a. - 462 a.a.) recombinant protein with GST-tag at N-terminal.

## Product Details

---

Purification: in vitro wheat germ expression system

## Target Details

---

Target: MCRS1

Alternative Name: MCRS1 ([MCRS1 Products](#))

Background: Full Gene Name: microspherule protein 1  
Synonyms: ICP22BP,INO80Q,MCRS2,MSP58,P78

Gene ID: 10445

NCBI Accession: [NM\\_006337](#)

## Application Details

---

Application Notes: Optimal working dilution should be determined by the investigator.

Comment: Preparation method: in vitro, wheat germ expression system  
Product Quality tested by: 12.5% SDS-PAGE Stained with Coomassie Blue.

Restrictions: For Research Use only

## Handling

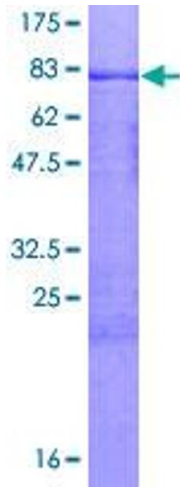
---

Buffer: 50 mM Tris-HCl, 10 mM reduced Glutathione, pH =8.0 in the elution buffer.

Handling Advice: Aliquot to avoid repeated freezing and thawing.

Storage: -80 °C

Storage Comment: Best use within three months from the date of receipt of this protein.



**Image 1.**