

Datasheet for ABIN1310583
MCU Protein (AA 1-351) (GST tag)



[Go to Product page](#)

1 Image

Overview

Quantity:	10 µg
Target:	MCU
Protein Characteristics:	AA 1-351
Origin:	Human
Source:	Wheat germ
Protein Type:	Recombinant
Purification tag / Conjugate:	This MCU protein is labelled with GST tag.
Application:	ELISA, Western Blotting (WB), Affinity Purification (AP), Antibody Array (AA)

Product Details

Purpose:	MCU (Human) Recombinant Protein (P01)
Sequence:	MAAAAGRSLL LLLSSRGGGG GGAGGCGALT AGCFPLGVS RHRQQQHHRT VHQRIASWQN LGAVYCSTV PSDDVTVVYQ NGLPVISVRL PSRRERCQFT LKPISDSVGV FLRQLQEEDR GIDRVAIYSP DGVRVAASTG IDLLLLDDFK LVINDLTYHV RPPKRDLLSH ENAATLNDVK TLVQQLYTTL CIEQHQLNKE RELIERLEDL KEQLAPLEKV RIEISRKAEK RTTLVLWGGL AYMATQFGIL ARLTWWEYSW DIMEPVTYFI TYGSAMAMYA YFVMTRQEYV YPEARDRQYL LFFHKGAKKS RFDLEKYNQL KDAIAQAEMD LKRLRDPLQV HLPLRQIGEK D
Characteristics:	Human MCU full-length ORF (NP_612366.1, 1 a.a. - 351 a.a.) recombinant protein with GST-tag at N-terminal.
Purification:	in vitro wheat germ expression system

Target Details

Target:	MCU
Alternative Name:	MCU (MCU Products)
Background:	Full Gene Name: mitochondrial calcium uniporter Synonyms: C10orf42,CCDC109A
Gene ID:	90550
NCBI Accession:	NM_138357
Pathways:	Positive Regulation of Peptide Hormone Secretion, Carbohydrate Homeostasis

Application Details

Application Notes:	Optimal working dilution should be determined by the investigator.
Comment:	Preparation method: in vitro, wheat germ expression system Product Quality tested by: 12.5% SDS-PAGE Stained with Coomassie Blue.
Restrictions:	For Research Use only

Handling

Buffer:	50 mM Tris-HCl, 10 mM reduced Glutathione, pH =8.0 in the elution buffer.
Handling Advice:	Aliquot to avoid repeated freezing and thawing.
Storage:	-80 °C
Storage Comment:	Best use within three months from the date of receipt of this protein.

Images

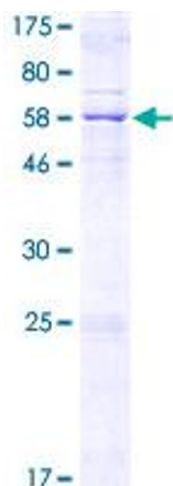


Image 1.