



[Go to Product page](#)

Datasheet for ABIN1310593  
**MDH1B Protein (AA 1-518) (GST tag)**

**1** Image

Overview

Quantity:	10 µg
Target:	MDH1B
Protein Characteristics:	AA 1-518
Origin:	Human
Source:	Wheat germ
Protein Type:	Recombinant
Purification tag / Conjugate:	This MDH1B protein is labelled with GST tag.
Application:	ELISA, Western Blotting (WB), Affinity Purification (AP), Antibody Array (AA)

Product Details

Purpose:	MDH1B (Human) Recombinant Protein (P01)
Sequence:	MAKFVIAGRA DCPYYAKTEL VADYLQKNLP DFRIHKITQR PEVWEDWLKD VCEKNKWSHK NSPIIWRELL DRGGKGLLLG GYNEFLEHAQ LYYDVTSSMT TELMMVIAQE NLGAHIEKEQ EEEALKTCIN PLQVWITSAS APACYNLIPI LTSGEVFGMH TEISITLFDN KQAEHLKSL VVETQDLASP VLRSVSICK VEEAFRQAHV IVLDDSTNK EVFTLEDCLR SRVPLCRLYG YLIEKNAHES VRVIVGGRTF VNLKTVLLMR YAPRIAHNII AVALGVEGEA KAILARKLKT APSYIKDVII WGNISGNMYV DLRKTRVYRY ESAIWGPLHY SRPVLNLIFD SEWVKREFVA ILKNTTTTGR QFGGILAAHS IATTLKYWYH GSPPGEIVSL GILSEGQFGI PKGIVFSMPV KFENGTWVVL TDLKDVEISE QIMTRMTSDL IQEKLVALGD KIHFPYQSG HKDLVPDEEK NLAMSDAAEF PNQIPQTTFE KPQSLEFLNE FEGKTVES
Characteristics:	Human MDH1B full-length ORF ( NP_001034934.1, 1 a.a. - 518 a.a.) recombinant protein with GST-tag at N-terminal.

## Product Details

---

Purification: in vitro wheat germ expression system

## Target Details

---

Target: MDH1B

Alternative Name: MDH1B ([MDH1B Products](#))

Background: Full Gene Name: malate dehydrogenase 1B, NAD (soluble)  
Synonyms: FLJ25341,RP11-95H11

Gene ID: 130752

NCBI Accession: [NM\\_001039845](#)

## Application Details

---

Application Notes: Optimal working dilution should be determined by the investigator.

Comment: Preparation method: in vitro, wheat germ expression system  
Product Quality tested by: 12.5% SDS-PAGE Stained with Coomassie Blue.

Restrictions: For Research Use only

## Handling

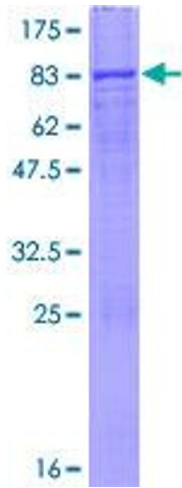
---

Buffer: 50 mM Tris-HCl, 10 mM reduced Glutathione, pH =8.0 in the elution buffer.

Handling Advice: Aliquot to avoid repeated freezing and thawing.

Storage: -80 °C

Storage Comment: Best use within three months from the date of receipt of this protein.



**Image 1.**