

Datasheet for ABIN1310595
MDH2 Protein (AA 1-338) (GST tag)



[Go to Product page](#)

1 Image

Overview

Quantity:	10 µg
Target:	MDH2
Protein Characteristics:	AA 1-338
Origin:	Human
Source:	Wheat germ
Protein Type:	Recombinant
Purification tag / Conjugate:	This MDH2 protein is labelled with GST tag.
Application:	Western Blotting (WB), ELISA, Affinity Purification (AP), Antibody Array (AA)

Product Details

Purpose:	MDH2 (Human) Recombinant Protein (P01)
Sequence:	MLSALARPAS AALRRSFSTS AQNNAKVAVL GASGGIGQPL SLLLKNSPLV SRLTLYDIAH TPGVAADLSH IETKAAVKGY LGPEQLPDCL KGCDVVVIPA GVPRKPGMTR DDLFNTNATI VATLTAACAQ HCPEAMICVI ANPVNSTIPI TAEVFKKHGV YNPKNIFGVT TLDIVRANTF VAELKGLDPA RVNVPVIGGH AGKTIIP LIS QCTPKVDFPQ DQLTALTGRI QEAGTEVKA KAGAGSATLS MAYAGARFVF SLVDAMNGKE GVVECSFVKS QETECTYFST PLLLGKKGIE KNLGIGKVSS FEEKMISDAI PELKASIKKG EDFVKTLLK
Characteristics:	Human MDH2 full-length ORF (NP_005909.2, 1 a.a. - 338 a.a.) recombinant protein with GST-tag at N-terminal.
Purification:	in vitro wheat germ expression system

Target Details

Target:	MDH2
Alternative Name:	MDH2 (MDH2 Products)
Background:	Full Gene Name: malate dehydrogenase 2, NAD (mitochondrial) Synonyms: M-MDH,MDH,MGC:3559,MOR1
Gene ID:	4191
NCBI Accession:	NM_005918

Application Details

Application Notes:	Optimal working dilution should be determined by the investigator.
Comment:	Preparation method: in vitro, wheat germ expression system Product Quality tested by: 12.5% SDS-PAGE Stained with Coomassie Blue.
Restrictions:	For Research Use only

Handling

Buffer:	50 mM Tris-HCl, 10 mM reduced Glutathione, pH =8.0 in the elution buffer.
Handling Advice:	Aliquot to avoid repeated freezing and thawing.
Storage:	-80 °C
Storage Comment:	Best use within three months from the date of receipt of this protein.

Images

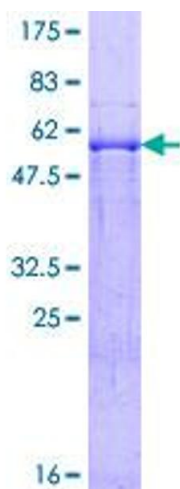


Image 1.