

Datasheet for ABIN1310602  
**MDM2 Protein (AA 101-200) (GST tag)**



[Go to Product page](#)

1 Image

Overview

Quantity:	10 µg
Target:	MDM2
Protein Characteristics:	AA 101-200
Origin:	Human
Source:	Wheat germ
Protein Type:	Recombinant
Purification tag / Conjugate:	This MDM2 protein is labelled with GST tag.
Application:	Western Blotting (WB), ELISA, Affinity Purification (AP), Antibody Array (AA)

Product Details

Purpose:	MDM2 (Human) Recombinant Protein (Q01)
Sequence:	TMIYRNLVVV NQQESSDSGT SVSENRCHLE GGSDQKDLVQ ELQEEKPSSS HLVSRPSTSS RRRAISETEE NSDELSEGERQ RKRHKSDSIS LSFDESLALC
Characteristics:	Human MDM2 partial ORF ( NP_002383, 101 a.a. - 200 a.a.) recombinant protein with GST-tag at N-terminal.
Purification:	in vitro wheat germ expression system

Target Details

Target:	MDM2
Alternative Name:	MDM2 ( <a href="#">MDM2 Products</a> )

## Target Details

Background:	Full Gene Name: Mdm2 p53 binding protein homolog (mouse) Synonyms: HDMX,MGC71221,hdm2
Gene ID:	4193
NCBI Accession:	<a href="#">NM_002392</a>
Pathways:	<a href="#">p53 Signaling</a> , <a href="#">PI3K-Akt Signaling</a> , <a href="#">Cell Division Cycle</a> , <a href="#">Fc-epsilon Receptor Signaling Pathway</a> , <a href="#">EGFR Signaling Pathway</a> , <a href="#">Neurotrophin Signaling Pathway</a> , <a href="#">Autophagy</a> , <a href="#">Ubiquitin Proteasome Pathway</a>

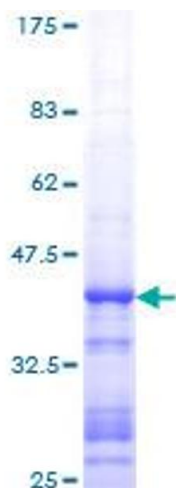
## Application Details

Application Notes:	Optimal working dilution should be determined by the investigator.
Comment:	Preparation method: in vitro, wheat germ expression system Product Quality tested by: 12.5% SDS-PAGE Stained with Coomassie Blue.
Restrictions:	For Research Use only

## Handling

Buffer:	50 mM Tris-HCl, 10 mM reduced Glutathione, pH =8.0 in the elution buffer.
Handling Advice:	Aliquot to avoid repeated freezing and thawing.
Storage:	-80 °C
Storage Comment:	Best use within three months from the date of receipt of this protein.

## Images



**Image 1.**