

Datasheet for ABIN1310614
ME1 Protein (AA 1-572) (GST tag)



[Go to Product page](#)

1 Image

Overview

Quantity:	10 µg
Target:	ME1
Protein Characteristics:	AA 1-572
Origin:	Human
Source:	Wheat germ
Protein Type:	Recombinant
Purification tag / Conjugate:	This ME1 protein is labelled with GST tag.
Application:	ELISA, Western Blotting (WB), Affinity Purification (AP), Antibody Array (AA)

Product Details

Purpose:	ME1 (Human) Recombinant Protein (P01)
Sequence:	MEPEAPRRRH THQRGYLLTR NPHLNKDLAF TLEERQLNI HGLLPPSFNS QEIQVLRVVK NFEHLNSDFD RYLLMLDQD RNEKLFYRVL TSDIEKFMPI VYTPTVGLAC QQYSLVFRKP RGLFITIHDR GHIASVLNAW PEDVIKAIIV TDGERILGLG DLGCNGMGIP VGKLALYTAC GGMNPQECLP VILDVGTENE ELLKDPLYIG LRQRRVRGSE YDDFLDEFME AVSSKYGMNC LIQFEDFANV NAFRLLNKYR NQYCTFNDDI QGTASVAVAG LLAALRITKN KLSAQITLQ GAGEAALGIA HLIVMALEKE GLPKEKAIAK IWLVDKGLI VKGRASLTQE KEKFAHEHEE MKNLEAIVQE IKPTALIGVA AIGGAFSEQI LKDMAAFNER PIIFALSNT SKAECSAEQC YKITKGRAIF ASGSPFDPVT LPNGQTLYPG QGNNSYVFPG VALGVVACGL RQITDNIFLT TAEVIAQQVS DKHLEEGRLY PPLNTIRDVS LKIAEKIVKD AYQEKTATVY PEPQNKEAFV RSQMYSTDYD QILPDCYSWP EEVQKIQTQV DQ
Characteristics:	Human ME1 full-length ORF (AAH25246, 1 a.a. - 572 a.a.) recombinant protein with GST-tag at

Product Details

N-terminal.

Purification: in vitro wheat germ expression system

Target Details

Target: ME1

Alternative Name: ME1 ([ME1 Products](#))

Background: Full Gene Name: malic enzyme 1, NADP(+)-dependent, cytosolic
Synonyms: HUMNDME,MES

Gene ID: 4199

Pathways: [Regulation of Lipid Metabolism by PPARalpha](#)

Application Details

Application Notes: Optimal working dilution should be determined by the investigator.

Comment: Preparation method: in vitro, wheat germ expression system
Product Quality tested by: 12.5% SDS-PAGE Stained with Coomassie Blue.

Restrictions: For Research Use only

Handling

Buffer: 50 mM Tris-HCl, 10 mM reduced Glutathione, pH =8.0 in the elution buffer.

Handling Advice: Aliquot to avoid repeated freezing and thawing.

Storage: -80 °C

Storage Comment: Best use within three months from the date of receipt of this protein.

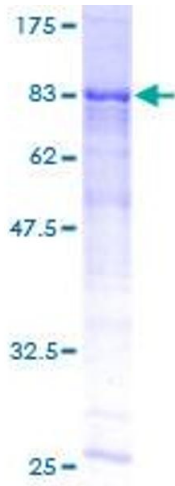


Image 1.