



[Go to Product page](#)

Datasheet for ABIN1310630

MED12 Protein (AA 1829-1941) (GST tag)

1 Image

Overview

Quantity:	10 µg
Target:	MED12
Protein Characteristics:	AA 1829-1941
Origin:	Human
Source:	Wheat germ
Protein Type:	Recombinant
Purification tag / Conjugate:	This MED12 protein is labelled with GST tag.
Application:	Affinity Purification (AP), Antibody Array (AA), ELISA, Western Blotting (WB)

Product Details

Purpose:	MED12 (Human) Recombinant Protein (Q01)
Sequence:	QPATKTEDYG MGPGRSGPYG VTVPPDLLHH PNPGSITHLN YRQGSIGLYT QNQPLPAGGP RVDPYRPVRL PMQKLPTRPT YPGVLPTTMT GVMGLEPSSY KTSVYRQQP AVP
Characteristics:	Human MED12 partial ORF (NP_005111, 1829 a.a. - 1941 a.a.) recombinant protein with GST-tag at N-terminal.
Purification:	in vitro wheat germ expression system

Target Details

Target:	MED12
Alternative Name:	MED12 (MED12 Products)

Target Details

Background:	Full Gene Name: mediator complex subunit 12 Synonyms: CAGH45,FGS1,HOPA,KIAA0192,OKS,OPA1,TNRC11,TRAP230
Gene ID:	9968
NCBI Accession:	NM_005120
Pathways:	Intracellular Steroid Hormone Receptor Signaling Pathway , Nuclear Hormone Receptor Binding , Stem Cell Maintenance , Chromatin Binding , Regulation of Lipid Metabolism by PPARalpha , Tube Formation

Application Details

Application Notes:	Optimal working dilution should be determined by the investigator.
Comment:	Preparation method: in vitro, wheat germ expression system Product Quality tested by: 12.5% SDS-PAGE Stained with Coomassie Blue.
Restrictions:	For Research Use only

Handling

Buffer:	50 mM Tris-HCl, 10 mM reduced Glutathione, pH =8.0 in the elution buffer.
Handling Advice:	Aliquot to avoid repeated freezing and thawing.
Storage:	-80 °C
Storage Comment:	Best use within three months from the date of receipt of this protein.

Images

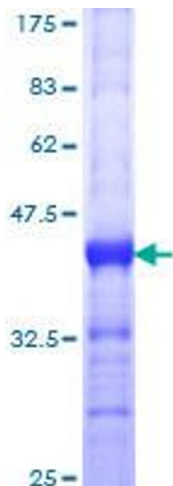


Image 1.