



[Go to Product page](#)

Datasheet for ABIN1310670
MED30 Protein (AA 1-178) (GST tag)

1 Image

Overview

Quantity:	25 µg
Target:	MED30
Protein Characteristics:	AA 1-178
Origin:	Human
Source:	Wheat germ
Protein Type:	Recombinant
Purification tag / Conjugate:	This MED30 protein is labelled with GST tag.
Application:	ELISA, Western Blotting (WB), Affinity Purification (AP), Antibody Array (AA)

Product Details

Purpose:	THRAP6 (Human) Recombinant Protein (P01)
Sequence:	MSTPPLAASG MAPGPFAGPQ AQAAREVNT ASLCRIGQET VQDIVYRTME IFQLLRNMQL PNGVTYHTGT YQDRLTKLQD NLRQLSVLFR KLRLVYDKCN ENCGGMDPIP VEQLIPYVEE DGSKNDDRAG PPRFASEERR EIAEVNKKLK QKNQQLKQIM DQLRNLIWDI NAMLAMRN
Characteristics:	Human THRAP6 full-length ORF (AAH08226, 1 a.a. - 178 a.a.) recombinant protein with GST-tag at N-terminal.
Purification:	in vitro wheat germ expression system

Target Details

Target:	MED30
Alternative Name:	MED30 (MED30 Products)

Target Details

Background:	Full Gene Name: mediator complex subunit 30 Synonyms: MGC9890,THRAP6,TRAP25
Gene ID:	90390
Pathways:	Intracellular Steroid Hormone Receptor Signaling Pathway , Nuclear Hormone Receptor Binding , Stem Cell Maintenance , Regulation of Lipid Metabolism by PPARalpha

Application Details

Application Notes:	Optimal working dilution should be determined by the investigator.
Comment:	Preparation method: in vitro, wheat germ expression system Product Quality tested by: 12.5% SDS-PAGE Stained with Coomassie Blue.
Restrictions:	For Research Use only

Handling

Buffer:	50 mM Tris-HCl, 10 mM reduced Glutathione, pH =8.0 in the elution buffer.
Handling Advice:	Aliquot to avoid repeated freezing and thawing.
Storage:	-80 °C
Storage Comment:	Best use within three months from the date of receipt of this protein.

Images

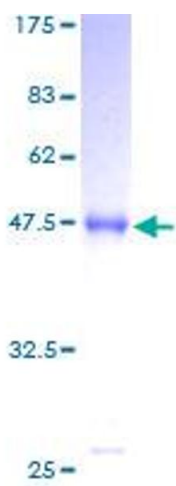


Image 1.