



[Go to Product page](#)

Datasheet for ABIN1310704

MEIS1 Protein (AA 1-90) (GST tag)

1 Image

Overview

Quantity:	10 µg
Target:	MEIS1
Protein Characteristics:	AA 1-90
Origin:	Human
Source:	Wheat germ
Protein Type:	Recombinant
Purification tag / Conjugate:	This MEIS1 protein is labelled with GST tag.
Application:	ELISA, Western Blotting (WB), Affinity Purification (AP), Antibody Array (AA)

Product Details

Purpose:	MEIS1 (Human) Recombinant Protein (Q01)
Sequence:	MAQRYDDLPH YGGMDGVGIP STMYGDPHAA RSMQPVHHLN HGPPLHSHQY PHTAHTNAMA PSMGSSVNDA LKRDKDAIYG HPLFPLLALI
Characteristics:	Human MEIS1 partial ORF (NP_002389, 1 a.a. - 90 a.a.) recombinant protein with GST-tag at N-terminal.
Purification:	in vitro wheat germ expression system

Target Details

Target:	MEIS1
Alternative Name:	MEIS1 (MEIS1 Products)

Target Details

Background: Full Gene Name: Meis homeobox 1
Synonyms: MGC43380

Gene ID: 4211

NCBI Accession: [NM_002398](#)

Pathways: [Chromatin Binding](#)

Application Details

Application Notes: Optimal working dilution should be determined by the investigator.

Comment: Preparation method: in vitro, wheat germ expression system
Product Quality tested by: 12.5% SDS-PAGE Stained with Coomassie Blue.

Restrictions: For Research Use only

Handling

Buffer: 50 mM Tris-HCl, 10 mM reduced Glutathione, pH =8.0 in the elution buffer.

Handling Advice: Aliquot to avoid repeated freezing and thawing.

Storage: -80 °C

Storage Comment: Best use within three months from the date of receipt of this protein.

Images

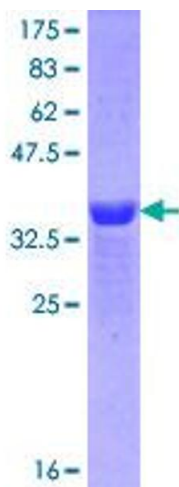


Image 1.