



[Go to Product page](#)

Datasheet for ABIN1310714

Menin Protein (AA 1-575) (GST tag)

1 Image

Overview

Quantity:	10 µg
Target:	Menin (MEN1)
Protein Characteristics:	AA 1-575
Origin:	Human
Source:	Wheat germ
Protein Type:	Recombinant
Purification tag / Conjugate:	This Menin protein is labelled with GST tag.
Application:	Western Blotting (WB), ELISA, Affinity Purification (AP), Antibody Array (AA)

Product Details

Purpose:	MEN1 (Human) Recombinant Protein (P01)
Sequence:	MGLKAAQKTL FPLRSIDDVV RLFAAELGRE EPDLVLLSLV LGFVEHFLAV NRVIPTNVPE LTFQPSPAPD PPGGLTYFPV ADLSIIAALY ARFTAQIRGA VDLSLYPREG GVSSRELVKK VSDVIWNSLS RSYFKDRAHI QSLFSFITGT KLDSSGVAFA VVGACQALGL RDVHLALSED HAWSWLYLKG SYMRCDRKME VAFMVCAINP SIDLHTDSLE LLQLQKLLW LLYDLGHLER YPMALGNLAD LEELEPTPGR PDPLTLYHKG IASAKTYRD EHIYPMYLA GYHCRNRNVR EALQAWADTA TVIQDYNYCR EDEEIYKEFF EVANDVIPNL LKEAASLLEA GEERPGEQSQ GTQSQGSALQ DPECFALLR FYDGICKWEE GSPTPVLHVG WATFLVQSLG RFEGQVRQKV RIVSREAEEA EAEEPWGEEA REGRRRGPRR ESKPEEPPPP KKPALDKGLG TGQGAVSGPP RKPPGTVAGT ARGPEGGSTA QVPAPAASPP PEGPVLTFQS EKMKGMKELL VATKINSSAI KLQLTAQSQV QMKKQKVSTP SDYTLSFLKR QRKGL
Characteristics:	Human MEN1 full-length ORF (AAH02544, 1 a.a. - 575 a.a.) recombinant protein with GST-tag

Product Details

at N-terminal.

Purification: in vitro wheat germ expression system

Target Details

Target: Menin (MEN1)

Alternative Name: MEN1 ([MEN1 Products](#))

Background: Full Gene Name: multiple endocrine neoplasia I
Synonyms: MEAI,SCG2

Gene ID: 4221

Pathways: [Chromatin Binding](#), [Positive Regulation of Endopeptidase Activity](#)

Application Details

Application Notes: Optimal working dilution should be determined by the investigator.

Comment: Preparation method: in vitro, wheat germ expression system
Product Quality tested by: 12.5% SDS-PAGE Stained with Coomassie Blue.

Restrictions: For Research Use only

Handling

Buffer: 50 mM Tris-HCl, 10 mM reduced Glutathione, pH =8.0 in the elution buffer.

Handling Advice: Aliquot to avoid repeated freezing and thawing.

Storage: -80 °C

Storage Comment: Best use within three months from the date of receipt of this protein.

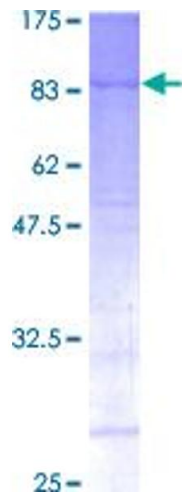


Image 1.