



[Go to Product page](#)

Datasheet for ABIN1310735

c-MET Protein (AA 26-125) (GST tag)

1 Image

Overview

Quantity:	10 µg
Target:	c-MET (MET)
Protein Characteristics:	AA 26-125
Origin:	Human
Source:	Wheat germ
Protein Type:	Recombinant
Purification tag / Conjugate:	This c-MET protein is labelled with GST tag.
Application:	Western Blotting (WB), ELISA, Affinity Purification (AP), Antibody Array (AA)

Product Details

Purpose:	MET (Human) Recombinant Protein (Q01)
Sequence:	CKEALAKSEM NVNMKYQLPN FTAETPIQNV ILHEHHIFLG ATNYIYVLNE EDLQKVAEYK TGPVLEHPDC FPCQDCSSKA NLSGGVWKDN INMALVVDTY
Characteristics:	Human MET partial ORF (NM_000245, 26 a.a. - 125 a.a.) recombinant protein with GST-tag at N-terminal.
Purification:	in vitro wheat germ expression system

Target Details

Target:	c-MET (MET)
Alternative Name:	MET (MET Products)

Target Details

Background:	Full Gene Name: met proto-oncogene (hepatocyte growth factor receptor) Synonyms: AUTS9,HGFR,RCCP2,c-Met
Gene ID:	4233
NCBI Accession:	NM_000245
Pathways:	RTK Signaling , Carbohydrate Homeostasis , Synaptic Membrane , Signaling of Hepatocyte Growth Factor Receptor

Application Details

Application Notes:	Optimal working dilution should be determined by the investigator.
Comment:	Preparation method: in vitro, wheat germ expression system Product Quality tested by: 12.5% SDS-PAGE Stained with Coomassie Blue.
Restrictions:	For Research Use only

Handling

Buffer:	50 mM Tris-HCl, 10 mM reduced Glutathione, pH =8.0 in the elution buffer.
Handling Advice:	Aliquot to avoid repeated freezing and thawing.
Storage:	-80 °C
Storage Comment:	Best use within three months from the date of receipt of this protein.

Images

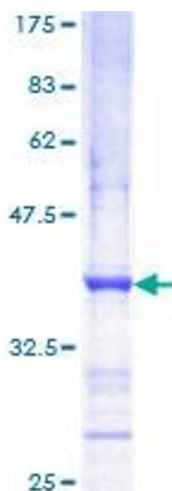


Image 1.