



[Go to Product page](#)

Datasheet for ABIN1310737

METAP1 Protein (AA 1-272) (GST tag)

1 Image

Overview

Quantity:	10 µg
Target:	METAP1
Protein Characteristics:	AA 1-272
Origin:	Human
Source:	Wheat germ
Protein Type:	Recombinant
Purification tag / Conjugate:	This METAP1 protein is labelled with GST tag.
Application:	ELISA, Western Blotting (WB), Affinity Purification (AP), Antibody Array (AA)

Product Details

Purpose:	METAP1 (Human) Recombinant Protein (P01)
Sequence:	MSESEQALKG TSQIKLLSSE DIEGMRLVCR LAREVLDVAA GMIKPGVTTE EIDHAVHLAC IARNCYPSPL NYYNFPKSCC TSVNEVICHG IPDRRPLQEG DIVNVDITLY RNGYHGDLNE TFFVGEVDDG ARKLVQTTYE CLMQAIDAVK PGMRYRELGN IIQKHAQANG FSVVRSYCGH GIHKLFTAP NVPHYAKNKA VGVMKSGHVF TIEPMICEGG WQDETWPDGW TAVTRDGKRS AQFEHTLLVT DTGCEILTRR LDSARPHFMS QF
Characteristics:	Human METAP1 full-length ORF (NP_055958.1, 1 a.a. - 272 a.a.) recombinant protein with GST-tag at N-terminal.
Purification:	in vitro wheat germ expression system

Target Details

Target:	METAP1
Alternative Name:	METAP1 (METAP1 Products)
Background:	Full Gene Name: methionyl aminopeptidase 1 Synonyms: DKFZp781C0419,KIAA0094
Gene ID:	23173
NCBI Accession:	NM_015143
Pathways:	Regulation of G-Protein Coupled Receptor Protein Signaling

Application Details

Application Notes:	Optimal working dilution should be determined by the investigator.
Comment:	Preparation method: in vitro, wheat germ expression system Product Quality tested by: 12.5% SDS-PAGE Stained with Coomassie Blue.
Restrictions:	For Research Use only

Handling

Buffer:	50 mM Tris-HCl, 10 mM reduced Glutathione, pH =8.0 in the elution buffer.
Handling Advice:	Aliquot to avoid repeated freezing and thawing.
Storage:	-80 °C
Storage Comment:	Best use within three months from the date of receipt of this protein.

Images

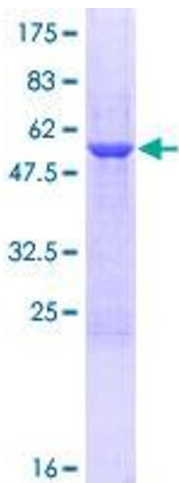


Image 1.