

Datasheet for ABIN1310760

## METTL3 Protein (AA 1-580) (GST tag)



[Go to Product page](#)

### 1 Image

#### Overview

Quantity:	10 µg
Target:	METTL3
Protein Characteristics:	AA 1-580
Origin:	Human
Source:	Wheat germ
Protein Type:	Recombinant
Purification tag / Conjugate:	This METTL3 protein is labelled with GST tag.
Application:	ELISA, Western Blotting (WB), Affinity Purification (AP), Antibody Array (AA)

#### Product Details

Purpose:	METTL3 (Human) Recombinant Protein (P01)
Sequence:	MSDTWSSIIQA HKKQLDSLRE RLQRRRKQDS GHLDLRNPEA ALSPTFRSDS PVPTAPTSGG PKPSTASAVP ELATDPELEK KLLHHLSDLA LTLPTDAVSI CLAISTPDAP ATQDGVESLL QKFAAQELIE VKRGLLQDDA HPTLVTYADH SKLSAMMGAV AEKKGPEVA GTVTGQKRRA EQDSTTVAAF ASSLVSLNS SASEPAKEPA KKSrkHAASD VDLEIESLLN QQSTKEQQSK KVSQEILELL NTTTAKEQSI VEKFRSRGRA QVQEFCDYGT KEECMKASDA DRPCRKLHFR RIINKHTDES LGDCSFLNTC FHMDTCKYVH YEIDACMDSE APGSKDHTPS QELALTQSVG GDSSADRLFP PQWICCDIRY LDVSILGKFA VVMADPPWDI HMELPYGTLT DDEMRRLNIP VLQDDGFLFL WVTGRAMELG RECLNLWGYE RVDEIIWVKT NQLQRIIRTG RTGHWLNHGK EHCLVGVKGN PQGFNQLDC DVIVAEVRST SHKPDEIYGM IERLSPGTRK IELFGRPHNV QPNWITLGNQ LDGIHLLDPD VVARFKQRYP DGIISKPKNL
Characteristics:	Human METTL3 full-length ORF ( NP_062826.2, 1 a.a. - 580 a.a.) recombinant protein with GST-

## Product Details

---

tag at N-terminal.

Purification: in vitro wheat germ expression system

## Target Details

---

Target: METTL3

Alternative Name: METTL3 ([METTL3 Products](#))

Background: Full Gene Name: methyltransferase like 3  
Synonyms: IME4,M6A,MGC4336,MT-A70,Spo8

Gene ID: 56339

NCBI Accession: [NM\\_019852](#)

## Application Details

---

Application Notes: Optimal working dilution should be determined by the investigator.

Comment: Preparation method: in vitro, wheat germ expression system  
Product Quality tested by: 12.5% SDS-PAGE Stained with Coomassie Blue.

Restrictions: For Research Use only

## Handling

---

Buffer: 50 mM Tris-HCl, 10 mM reduced Glutathione, pH =8.0 in the elution buffer.

Handling Advice: Aliquot to avoid repeated freezing and thawing.

Storage: -80 °C

Storage Comment: Best use within three months from the date of receipt of this protein.

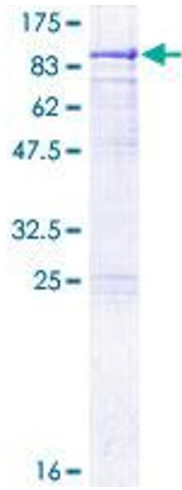


Image 1.