

Datasheet for ABIN1310762
METTL4 Protein (AA 1-472) (GST tag)



[Go to Product page](#)

1 Image

Overview

Quantity:	25 µg
Target:	METTL4
Protein Characteristics:	AA 1-472
Origin:	Human
Source:	Wheat germ
Protein Type:	Recombinant
Purification tag / Conjugate:	This METTL4 protein is labelled with GST tag.
Application:	ELISA, Western Blotting (WB), Affinity Purification (AP), Antibody Array (AA)

Product Details

Purpose:	METTL4 (Human) Recombinant Protein (P01)
Sequence:	MSVWHQLSAG WLLDHLSFIN KINYQLHQHH EPCCRKKEFT TSVHFESLQM DSVSSSGVCA AFIASDSSTK PENDDGGNYE MFTRKFVFRP ELFDVTKPYI TPAVHKECQQ SNEKEDLMNG VKKEISISII GKRRKRCVVF NQGELDAMEY HTKIRELILD GSLQLIQEGL KSGFLYPLFE KQDKGSKPIT LPLDACSLSE LCEMAKHLPS LNEMEHQTLQ LVEEDTSVTE QDLFLRVEN NSSFTKVITL MGQKYLLPPK SSFLLSDISC MQPLLNYRKT FDVIVIDPPW QNKSVKRSNR YSYLSPLQIQ QIPIPKLAAP NCLLVTWVTN RQKHLRFIKE ELYPSWSVEV VAEWHWVKIT NSGEFVFLD SPHKKPYEGL ILGRVQEKA LPLRNADVNV LPIPDHKLIV SVPCTLHSHK PPLAEVLKDY IKPDGEYLEL FARNLQPGWT SWGNEVLKFQ HVDYFIALES GS
Characteristics:	Human METTL4 full-length ORF (NP_073751.2, 1 a.a. - 472 a.a.) recombinant protein with GST-tag at N-terminal.

Product Details

Purification: in vitro wheat germ expression system

Target Details

Target: METTL4

Alternative Name: METTL4 ([METTL4 Products](#))

Background: Full Gene Name: methyltransferase like 4
Synonyms: FLJ23017,HsT661,MGC117235

Gene ID: 64863

NCBI Accession: [NM_022840](#)

Application Details

Application Notes: Optimal working dilution should be determined by the investigator.

Comment: Preparation method: in vitro, wheat germ expression system
Product Quality tested by: 12.5% SDS-PAGE Stained with Coomassie Blue.

Restrictions: For Research Use only

Handling

Buffer: 50 mM Tris-HCl, 10 mM reduced Glutathione, pH =8.0 in the elution buffer.

Handling Advice: Aliquot to avoid repeated freezing and thawing.

Storage: -80 °C

Storage Comment: Best use within three months from the date of receipt of this protein.

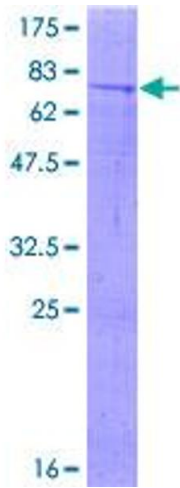


Image 1.