



[Go to Product page](#)

Datasheet for ABIN1310767

METTL7A Protein (AA 1-244) (GST tag)

1 Image

Overview

Quantity:	10 µg
Target:	METTL7A
Protein Characteristics:	AA 1-244
Origin:	Human
Source:	Wheat germ
Protein Type:	Recombinant
Purification tag / Conjugate:	This METTL7A protein is labelled with GST tag.
Application:	ELISA, Western Blotting (WB), Affinity Purification (AP), Antibody Array (AA)

Product Details

Purpose:	METTL7A (Human) Recombinant Protein (P01)
Sequence:	MELTIFILRL AIYILTFPLY LLNFLGLWSW ICKKWFPYFL VRFTVIYNEQ MASKKRELFS NLQEFAGPSG KLSLLEVGCG TGANFKFYPP GCRVTCIDPN PNFEKFLIKS IAENRHLQFE RFVVAAGENM HQVADGSVDV VVCTLVLCVS KNQERILREV CRVLRPGGAF YFMEHVAAEC STWNYFWQQV LDPAWHLLFD GCNLTRESWK ALERASFSKL KLQHIQAPLS WELVRPHIYG YAVK
Characteristics:	Human METTL7A full-length ORF (NP_054752.3, 1 a.a. - 244 a.a.) recombinant protein with GST-tag at N-terminal.
Purification:	in vitro wheat germ expression system

Target Details

Target:	METTL7A
---------	---------

Target Details

Alternative Name: METTL7A ([METTL7A Products](#))

Background: Full Gene Name: methyltransferase like 7A
Synonyms: AAM-B,DKFZp586A0522

Gene ID: 25840

NCBI Accession: [NM_014033](#)

Application Details

Application Notes: Optimal working dilution should be determined by the investigator.

Comment: Preparation method: in vitro, wheat germ expression system
Product Quality tested by: 12.5% SDS-PAGE Stained with Coomassie Blue.

Restrictions: For Research Use only

Handling

Buffer: 50 mM Tris-HCl, 10 mM reduced Glutathione, pH =8.0 in the elution buffer.

Handling Advice: Aliquot to avoid repeated freezing and thawing.

Storage: -80 °C

Storage Comment: Best use within three months from the date of receipt of this protein.

Images

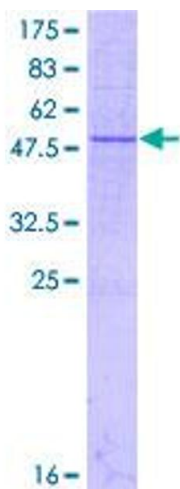


Image 1.