

Datasheet for ABIN1310813
MFSD2A Protein (AA 1-530) (GST tag)



[Go to Product page](#)

1 Image

Overview

Quantity:	10 µg
Target:	MFSD2A
Protein Characteristics:	AA 1-530
Origin:	Human
Source:	Wheat germ
Protein Type:	Recombinant
Purification tag / Conjugate:	This MFSD2A protein is labelled with GST tag.
Application:	ELISA, Western Blotting (WB), Affinity Purification (AP), Antibody Array (AA)

Product Details

Purpose:	MFSD2 (Human) Recombinant Protein (P01)
Sequence:	MAKGEAESG SAAGLLPTSI LQSTERPAQV KKEPKKKKQQ LSVCNKLCYA LGGAPYQVTG CALGFFLQIY LLDVAQVGPF SASIILFVGR AWDAITDPLV GLCISKSPWT CLGRLMPWII FSTPLAVIAY FLIWFVPDFP HGQTYWYLLF YCLFETMVT C FHV PYSALTM FISTEQTERD SATAYRMTVE VLGTVLGTAI QGQIVGQADT PCFQDLNSST VASQSANTHT GTTSHRETQK AYLLAAGVIV CIYIICAVIL ILGVREQREP YEAQQSEPIA YFRGLRLVMS HGPYIKLITG FLFTSLAFML VEGNFVLFCT YTLGFRNEFQ NLLLAIMLSA TLTIPIWQWF LTRFGKKTAV YVGISSAVPF LILVALMESN LIITYAVAVA AGISVAAAFL LPWSMLPDVI DDFHLKQPHF HGTEPIFFSF YVFFTKFASG VSLGISTLSL DFAGYQTRGC SQPERVKFTL NMLVTMAPIV LILLGLLLFK MYPIDEERRR QNKKALQALR DEASSSGCSE TDSTELASIL
Characteristics:	Human MFSD2 full-length ORF (NP_116182.2, 1 a.a. - 530 a.a.) recombinant protein with GST-tag at N-terminal.

Product Details

Purification: in vitro wheat germ expression system

Target Details

Target: MFSD2A

Alternative Name: MFSD2 ([MFSD2A Products](#))

Background: Full Gene Name: major facilitator superfamily domain containing 2
Synonyms: FLJ14490,FLJ35904,FP1147,HMFN0656,PP10484,RP3-342P20.1

Gene ID: 84879

NCBI Accession: [NM_032793](#)

Application Details

Application Notes: Optimal working dilution should be determined by the investigator.

Comment: Preparation method: in vitro, wheat germ expression system
Product Quality tested by: 12.5% SDS-PAGE Stained with Coomassie Blue.

Restrictions: For Research Use only

Handling

Buffer: 50 mM Tris-HCl, 10 mM reduced Glutathione, pH =8.0 in the elution buffer.

Handling Advice: Aliquot to avoid repeated freezing and thawing.

Storage: -80 °C

Storage Comment: Best use within three months from the date of receipt of this protein.

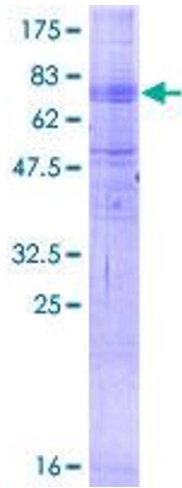


Image 1.