

Datasheet for ABIN1310819  
**MGAT1 Protein (AA 1-445) (GST tag)**



[Go to Product page](#)

1 Image

Overview

Quantity:	25 µg
Target:	MGAT1
Protein Characteristics:	AA 1-445
Origin:	Human
Source:	Wheat germ
Protein Type:	Recombinant
Purification tag / Conjugate:	This MGAT1 protein is labelled with GST tag.
Application:	ELISA, Western Blotting (WB), Affinity Purification (AP), Antibody Array (AA)

Product Details

Purpose:	MGAT1 (Human) Recombinant Protein (P01)
Sequence:	MLKKQSAGLV LWGAILFVAW NALLLLFFWT RPAPGRPPSV SALDGD PASL TREVIRLAQD AEVELERQRG LLQQIGDALS SQRGRVPTAA PPAQPRVPVT PPAVIPILV IACDRSTVRR CLDKLLHYRP SAELFPIIVS QDCGHEETAQ AIASYGSAVT HIRQPD LSSI AVPPDHRKFQ GYYKIARHYR WALGQVFRQF RFPAAVVVED DLEVAPDFFE YFRATYPLLK ADPSLWCVSA WNDNGKEQMV DASRPELLYR TDFFPGLGWL LLAELWAELE PKWPKAFWDD WMRRPEQRQG RACIRPEISR TMTFGRKGVS HGQFFDQHLK FIKLNQQFVH FTQLDLSYLQ REAYDRDFLA RVYGAPQLQV EKVRTNDRKE LGEVRVQYTG RDSFKAFKA LGVMDDLKSG VPRAGYRGIV TFQFRGRRVH LAPPPTWEGY DPSWN
Characteristics:	Human MGAT1 full-length ORF ( NP_002397.1, 1 a.a. - 445 a.a.) recombinant protein with GST-tag at N-terminal.

## Product Details

---

Purification: in vitro wheat germ expression system

## Target Details

---

Target: MGAT1

Alternative Name: MGAT1 ([MGAT1 Products](#))

Background: Full Gene Name: mannosyl (alpha-1,3-)-glycoprotein beta-1,2-N-acetylglucosaminyltransferase  
Synonyms: GLCNAC-TI, GLCT1, GLYT1, GNT-1, GNT-I, MGAT

Gene ID: 4245

NCBI Accession: [NM\\_002406](#)

## Application Details

---

Application Notes: Optimal working dilution should be determined by the investigator.

Comment: Preparation method: in vitro, wheat germ expression system  
Product Quality tested by: 12.5% SDS-PAGE Stained with Coomassie Blue.

Restrictions: For Research Use only

## Handling

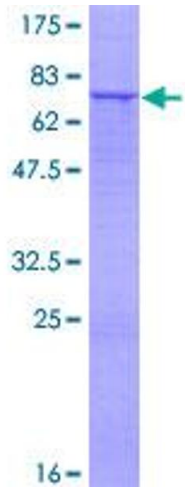
---

Buffer: 50 mM Tris-HCl, 10 mM reduced Glutathione, pH =8.0 in the elution buffer.

Handling Advice: Aliquot to avoid repeated freezing and thawing.

Storage: -80 °C

Storage Comment: Best use within three months from the date of receipt of this protein.



**Image 1.**