



[Go to Product page](#)

Datasheet for ABIN1310882

MGMT Protein (AA 1-207) (GST tag)

1 Image

Overview

Quantity:	10 µg
Target:	MGMT
Protein Characteristics:	AA 1-207
Origin:	Human
Source:	Wheat germ
Protein Type:	Recombinant
Purification tag / Conjugate:	This MGMT protein is labelled with GST tag.
Application:	Western Blotting (WB), ELISA, Affinity Purification (AP), Antibody Array (AA)

Product Details

Purpose:	MGMT (Human) Recombinant Protein (P01)
Sequence:	MDKDCMKRT TLDSPGKLE LSGCEQLHE IKLLGKGTSA ADAVEVPAPA AVLGGPEPLM QCTAWLNAYF HQPEAIEEFP VPALHHPVFQ QESFTRQVLW KLLKVVKFGF VISYQQLAAL AGNPKAARAV GGAMRGNPVP ILIPCHRVCV SSGAVGNYSGLAVKEWLLA HEGHRLGKPG LGGSSGLAGA WLKGAGATSG SPPAGRN
Characteristics:	Human MGMT full-length ORF (AAH00824, 1 a.a. - 207 a.a.) recombinant protein with GST-tag at N-terminal.
Purification:	in vitro wheat germ expression system

Target Details

Target:	MGMT
---------	------

Target Details

Alternative Name:	MGMT (MGMT Products)
Background:	Full Gene Name: O-6-methylguanine-DNA methyltransferase Synonyms:
Gene ID:	4255
Pathways:	DNA Damage Repair , Positive Regulation of Response to DNA Damage Stimulus

Application Details

Application Notes:	Optimal working dilution should be determined by the investigator.
Comment:	Preparation method: in vitro, wheat germ expression system Product Quality tested by: 12.5% SDS-PAGE Stained with Coomassie Blue.
Restrictions:	For Research Use only

Handling

Buffer:	50 mM Tris-HCl, 10 mM reduced Glutathione, pH =8.0 in the elution buffer.
Handling Advice:	Aliquot to avoid repeated freezing and thawing.
Storage:	-80 °C
Storage Comment:	Best use within three months from the date of receipt of this protein.

Images

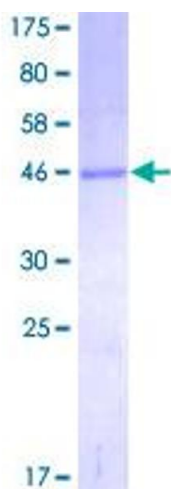


Image 1.