



[Go to Product page](#)

Datasheet for ABIN1310886

## MGP Protein (AA 1-103) (GST tag)

### 1 Image

#### Overview

Quantity:	10 µg
Target:	MGP
Protein Characteristics:	AA 1-103
Origin:	Human
Source:	Wheat germ
Protein Type:	Recombinant
Purification tag / Conjugate:	This MGP protein is labelled with GST tag.
Application:	Western Blotting (WB), ELISA, Affinity Purification (AP), Antibody Array (AA)

#### Product Details

Purpose:	MGP (Human) Recombinant Protein (P01)
Sequence:	MKSLILLAIL AALAVVTLCY ESHESMESYE LNPFINRRNA NTFISPQQRW RAKVQERIRE RSKPVHELNR EACDDYRLCE RYAMVYGYNA AYNRYFRKRR GAK
Characteristics:	Human MGP full-length ORF ( AAH05272, 1 a.a. - 103 a.a.) recombinant protein with GST-tag at N-terminal.
Purification:	in vitro wheat germ expression system

#### Target Details

Target:	MGP
Alternative Name:	MGP ( <a href="#">MGP Products</a> )

## Target Details

Background:	Gene: matrix Gla protein Synonyms: GIG36, MGLAP, NTI
Gene ID:	4256

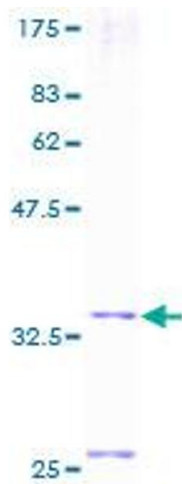
## Application Details

Application Notes:	Optimal working dilution should be determined by the investigator.
Restrictions:	For Research Use only

## Handling

Buffer:	50 mM Tris-HCl, 10 mM reduced Glutathione, pH =8.0 in the elution buffer.
Handling Advice:	Aliquot to avoid repeated freezing and thawing.
Storage:	-80 °C
Storage Comment:	Best use within three months from the date of receipt of this protein.

## Images



**Image 1.**