



[Go to Product page](#)

Datasheet for ABIN1310905

MIB2 Protein (AA 381-480) (GST tag)

1 Image

Overview

Quantity:	10 µg
Target:	MIB2
Protein Characteristics:	AA 381-480
Origin:	Human
Source:	Wheat germ
Protein Type:	Recombinant
Purification tag / Conjugate:	This MIB2 protein is labelled with GST tag.
Application:	Western Blotting (WB), ELISA, Affinity Purification (AP), Antibody Array (AA)

Product Details

Purpose:	MIB2 (Human) Recombinant Protein (Q01)
Sequence:	IGDLDTVKRL QAGHGEWTDD MAPALGRVGK VVKVFGDGNL RVAVAGQRWT FSPSCLVAYR PEEDANLDVA ERARENKSSL SVALDKLRAQ KSDPEHPGRL
Characteristics:	Human MIB2 partial ORF (AAH37542, 381 a.a. - 480 a.a.) recombinant protein with GST-tag at N-terminal.
Purification:	in vitro wheat germ expression system

Target Details

Target:	MIB2
Alternative Name:	MIB2 (MIB2 Products)

Target Details

Background: Full Gene Name: mindbomb homolog 2 (Drosophila)
Synonyms: FLJ20648,FLJ39787,ZZANK1,ZZZ5

Gene ID: 142678

Pathways: [Notch Signaling](#)

Application Details

Application Notes: Optimal working dilution should be determined by the investigator.

Comment: Preparation method: in vitro, wheat germ expression system
Product Quality tested by: 12.5% SDS-PAGE Stained with Coomassie Blue.

Restrictions: For Research Use only

Handling

Buffer: 50 mM Tris-HCl, 10 mM reduced Glutathione, pH =8.0 in the elution buffer.

Handling Advice: Aliquot to avoid repeated freezing and thawing.

Storage: -80 °C

Storage Comment: Best use within three months from the date of receipt of this protein.

Images

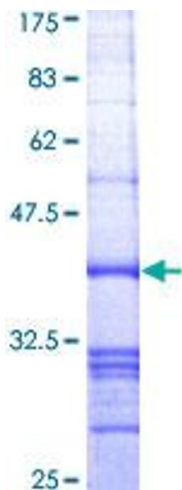


Image 1.