

Datasheet for ABIN1310909

MICAL1 Protein (AA 1-981) (GST tag)[Go to Product page](#)**1** Image

Overview

Quantity:	25 µg
Target:	MICAL1
Protein Characteristics:	AA 1-981
Origin:	Human
Source:	Wheat germ
Protein Type:	Recombinant
Purification tag / Conjugate:	This MICAL1 protein is labelled with GST tag.
Application:	ELISA, Western Blotting (WB), Affinity Purification (AP), Antibody Array (AA)

Product Details

Purpose:	MICAL1 (Human) Recombinant Protein (P01)
Sequence:	MASPTSTNPA HAHFESFLQA QLCQDVLSSF QELCGALGLE PGGGLPQYHK IKDQLNYWSA KSLWTKLDKR AGQPVYQQGR ACTSTKCLVV GAGPCGLRVA VELALLGARV VLVEKRTKFS RHNVLHLWPF TIHDLRALGA KKFYGRFCTG TLDHISIRQL QLLLLKVALL LGVEIHWGVT FTGLQPPPRK GSGWRAQLQP NPPAQLANYE FDLVISAAGG KVPPEGFKVR EMRGKLAIGI TANFVNGRTV EETQVPEISG VARIYNQSFF QLLKATGID LENIVYYKDD THYFVMTAKK QCLLRGLVLR QPFWPLGTGV ARGFLAAFDA AWMVKRWAEG AESLEVLAER ESLYQLLSQT SPENMHRNVA QYGLDPATRY PNLNLRVAVTP NQVRDLYDVL AKEPVQRNND KTDGMPATG SAGTQEELLR WCQEQTAGYP GVHVSDLSSS WADGLALCAL VYRLQPGLLE PSELQGLGAL EATAWALKVA ENELGITPVV SAQAVVAGSD PLGLIAYLSH FHSAFKSMAH SPGPVQSQTSP GTSSAVLFLS KLQRTLQRSR AKENAEDAGG KKLRLMEAE TPSTEVPPDP EPGVPLTPPS QHQEAGAGDL CALCGEHLYV LERLCVNGHF FHRSCFRCHT CEATLWPGGY EQHPGDGHFY

Product Details

CLQHLPQTDH KKEGSDRGPE SPELPTSEN SMPPGLSTPT ASQEGAGPVP DPSQPTRRQI
RLSSPERQRL SSLNLTPDPE MEPPPKPPRS CSALARHALE SSFVGWGLPV QSPQALVAME
KEEKESPFSS EEEEEVDPLD SDVEQALQTF AKTSGTMNNY PTWRRTLLRR AKEEEMKRFC
KAQTIQRRLN EIEAALRELE AEGVKLELAL RRQSSSPEQQ KKLWVGQLLQ LVDKKNLSVA
EEAELMITVQ ELNLEEKQWQ LDQELRGYMN REENLKTAAD RQAEDQVLRK LVDLVNQRDA
LIRFQEERL SELALGTGAQ G

Characteristics: Human MICAL1 full-length ORF (AAH09972.2, 1 a.a. - 981 a.a.) recombinant protein with GST-tag at N-terminal.

Purification: in vitro wheat germ expression system

Target Details

Target: MICAL1

Alternative Name: MICAL1 ([MICAL1 Products](#))

Background: Full Gene Name: microtubule associated monooxygenase, calponin and LIM domain containing 1
Synonyms: DKFZp434B1517,FLJ11937,FLJ21739,MICAL,MICAL-1,NICAL

Gene ID: 64780

Application Details

Application Notes: Optimal working dilution should be determined by the investigator.

Comment: Preparation method: in vitro, wheat germ expression system
Product Quality tested by: 12.5% SDS-PAGE Stained with Coomassie Blue.

Restrictions: For Research Use only

Handling

Buffer: 50 mM Tris-HCl, 10 mM reduced Glutathione, pH =8.0 in the elution buffer.

Handling Advice: Aliquot to avoid repeated freezing and thawing.

Storage: -80 °C

Storage Comment: Best use within three months from the date of receipt of this protein.

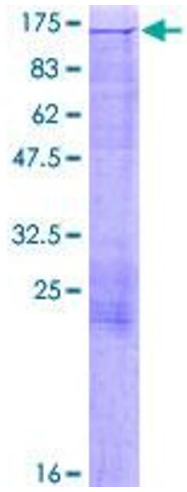


Image 1.