



[Go to Product page](#)

Datasheet for ABIN1310912

MICAL2 Protein (AA 1021-1123) (GST tag)

1 Image

Overview

Quantity:	10 µg
Target:	MICAL2
Protein Characteristics:	AA 1021-1123
Origin:	Human
Source:	Wheat germ
Protein Type:	Recombinant
Purification tag / Conjugate:	This MICAL2 protein is labelled with GST tag.
Application:	ELISA, Western Blotting (WB), Affinity Purification (AP), Antibody Array (AA)

Product Details

Purpose:	MICAL2 (Human) Recombinant Protein (Q01)
Sequence:	FFHRECFRCS ICATTLRLAA YTFDCDEGKF YCKPHFIHCK TNSKQRKRRR ELKQQREEEA TWQEQEAPRR DTPTESSCAV AAIGTLEGSP PVHFSLPVLH PLL
Characteristics:	Human MICAL2 partial ORF (NP_055447.1, 1021 a.a. - 1123 a.a.) recombinant protein with GST-tag at N-terminal.
Purification:	in vitro wheat germ expression system

Target Details

Target:	MICAL2
Alternative Name:	MICAL2 (MICAL2 Products)

Target Details

Background:	Full Gene Name: microtubule associated monooxygenase, calponin and LIM domain containing 2 Synonyms: DKFZp686H03148,DKFZp686H2469,KIAA0750,MICAL2PV1,MICAL2PV2
Gene ID:	9645
NCBI Accession:	NM_014632

Application Details

Application Notes:	Optimal working dilution should be determined by the investigator.
Comment:	Preparation method: in vitro, wheat germ expression system Product Quality tested by: 12.5% SDS-PAGE Stained with Coomassie Blue.
Restrictions:	For Research Use only

Handling

Buffer:	50 mM Tris-HCl, 10 mM reduced Glutathione, pH =8.0 in the elution buffer.
Handling Advice:	Aliquot to avoid repeated freezing and thawing.
Storage:	-80 °C
Storage Comment:	Best use within three months from the date of receipt of this protein.

Images

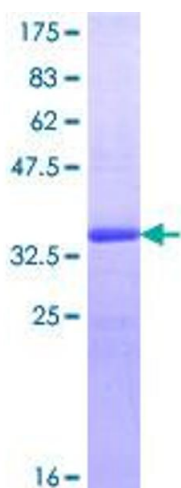


Image 1.