

Datasheet for ABIN1310934
MIER2 Protein (AA 1-545) (GST tag)



[Go to Product page](#)

1 Image

Overview

Quantity:	10 µg
Target:	MIER2
Protein Characteristics:	AA 1-545
Origin:	Human
Source:	Wheat germ
Protein Type:	Recombinant
Purification tag / Conjugate:	This MIER2 protein is labelled with GST tag.
Application:	ELISA, Western Blotting (WB), Affinity Purification (AP), Antibody Array (AA)

Product Details

Purpose:	MIER2 (Human) Recombinant Protein (P01)
Sequence:	MAEASSLGRQ SPRVVSCLEH SLCPGEPGLQ TTAVVSMGSG DHQFNLAEL SQNYSVRGEC EEASRCPDKP KEELEKDFIS QSNDMPFDEL LALYGYEASD PISDRESEGG DVAPNLPDMT LDKEQIAKDL LSGEEEEETQ SSADDLTPSV TSHEASDLFP NRSRSRFLAD EDREPGSSAS SDTEEDSLPA NKCKKEIMVG PQFQADLSNL HLNHRHCEKIY ENEDQLLWDP SVLPEREVEE FLYRAVKRRW HEMAGPQLPE GEAVKDSEQA LYELVKCNFN VEEALRRLRF NVKVIRDGLC AWSEEECRNF EHGFRVHGKN FHLIQANKVR TRSVGECVEY YYLWKKSERV DYFAQQTRLG RRYKVPSTTT DADQDLGSD PDGPGRRPPE QDTLTGMRTD PLSVDGTAGG LDEPGVASDG LPSSEPGPCS FQQLDESPAV PLSHRPPALA DPASYQPAVT APEPDASPRL AVDFALPKEL PLISSHVDLS GDPEETVAPA QVALSVTEFG LIGIGDVNPF LAAHPTCPAP GLHSEPLSHC NVMTTC
Characteristics:	Human MIER2 full-length ORF (NP_060020.1, 1 a.a. - 545 a.a.) recombinant protein with GST-tag at N-terminal.

Product Details

Purification: in vitro wheat germ expression system

Target Details

Target: MIER2

Alternative Name: MIER2 ([MIER2 Products](#))

Background: Full Gene Name: mesoderm induction early response 1, family member 2
Synonyms: KIAA1193

Gene ID: 54531

NCBI Accession: [NM_017550](#)

Pathways: [Chromatin Binding](#)

Application Details

Application Notes: Optimal working dilution should be determined by the investigator.

Comment: Preparation method: in vitro, wheat germ expression system
Product Quality tested by: 12.5% SDS-PAGE Stained with Coomassie Blue.

Restrictions: For Research Use only

Handling

Buffer: 50 mM Tris-HCl, 10 mM reduced Glutathione, pH =8.0 in the elution buffer.

Handling Advice: Aliquot to avoid repeated freezing and thawing.

Storage: -80 °C

Storage Comment: Best use within three months from the date of receipt of this protein.

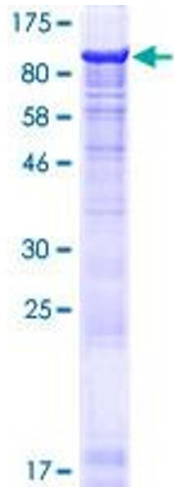


Image 1.