



[Go to Product page](#)

Datasheet for ABIN1310952

MIPOL1 Protein (AA 321-423) (GST tag)

1 Image

Overview

Quantity:	10 µg
Target:	MIPOL1
Protein Characteristics:	AA 321-423
Origin:	Human
Source:	Wheat germ
Protein Type:	Recombinant
Purification tag / Conjugate:	This MIPOL1 protein is labelled with GST tag.
Application:	ELISA, Western Blotting (WB), Affinity Purification (AP), Antibody Array (AA)

Product Details

Purpose:	MIPOL1 (Human) Recombinant Protein (Q01)
Sequence:	ARETAVQQYK KLEEEIQTLR VYVSLHKSLS QEENLKDQFN YTLSTYEEAL KNRENIVSIT QQQNEELATQ LQQALTERAN MELQLQHARE ASQVANAEKVQ KLE
Characteristics:	Human MIPOL1 partial ORF (NP_620059, 321 a.a. - 423 a.a.) recombinant protein with GST-tag at N-terminal.
Purification:	in vitro wheat germ expression system

Target Details

Target:	MIPOL1
Alternative Name:	MIPOL1 (MIPOL1 Products)

Target Details

Background: Full Gene Name: mirror-image polydactyly 1
Synonyms: DKFZp313M2036,MGC34010

Gene ID: 145282

NCBI Accession: [NM_138731](#)

Pathways: [SARS-CoV-2 Protein Interactome](#)

Application Details

Application Notes: Optimal working dilution should be determined by the investigator.

Comment: Preparation method: in vitro, wheat germ expression system
Product Quality tested by: 12.5% SDS-PAGE Stained with Coomassie Blue.

Restrictions: For Research Use only

Handling

Buffer: 50 mM Tris-HCl, 10 mM reduced Glutathione, pH =8.0 in the elution buffer.

Handling Advice: Aliquot to avoid repeated freezing and thawing.

Storage: -80 °C

Storage Comment: Best use within three months from the date of receipt of this protein.

Images

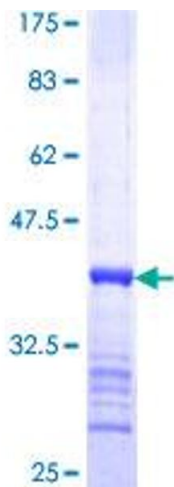


Image 1.