

Datasheet for ABIN1310978  
**MKNK2 Protein (AA 1-158) (GST tag)**



[Go to Product page](#)

1 Image

Overview

Quantity:	10 µg
Target:	MKNK2
Protein Characteristics:	AA 1-158
Origin:	Human
Source:	Wheat germ
Protein Type:	Recombinant
Purification tag / Conjugate:	This MKNK2 protein is labelled with GST tag.
Application:	ELISA, Western Blotting (WB), Affinity Purification (AP), Antibody Array (AA)

Product Details

Purpose:	MKNK2 (Human) Recombinant Protein (P01)
Sequence:	MAPEVVEAFS EEASIYDKRC DLWSLGVILY ILLSGYPPFV GRCGSDCGWD RGEACPACQN MLFESIQEGK YEFDPKDWAH ISCAAKDLIS KLLVRDAKQR LSAAQVLQHP WVQGCAPENT LPTPMVLQRW DSHFLLPPHP CRIHVRPGGL VRTVTVNE
Characteristics:	Human MKNK2 full-length ORF ( AAH18345, 1 a.a. - 158 a.a.) recombinant protein with GST-tag at N-terminal.
Purification:	in vitro wheat germ expression system

Target Details

Target:	MKNK2
Alternative Name:	MKNK2 ( <a href="#">MKNK2 Products</a> )

## Target Details

Background:	Full Gene Name: MAP kinase interacting serine/threonine kinase 2 Synonyms: GPRK7,MNK2
Gene ID:	2872
Pathways:	<a href="#">MAPK Signaling</a>

## Application Details

Application Notes:	Optimal working dilution should be determined by the investigator.
Comment:	Preparation method: in vitro, wheat germ expression system Product Quality tested by: 12.5% SDS-PAGE Stained with Coomassie Blue.
Restrictions:	For Research Use only

## Handling

Buffer:	50 mM Tris-HCl, 10 mM reduced Glutathione, pH =8.0 in the elution buffer.
Handling Advice:	Aliquot to avoid repeated freezing and thawing.
Storage:	-80 °C
Storage Comment:	Best use within three months from the date of receipt of this protein.

## Images

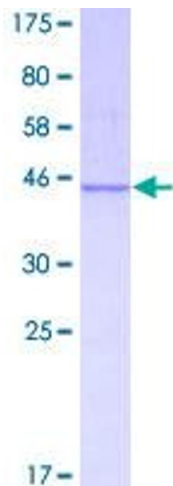


Image 1.