



[Go to Product page](#)

Datasheet for ABIN1311008
MLKL Protein (AA 1-471) (GST tag)

1 Image

Overview

Quantity:	10 µg
Target:	MLKL
Protein Characteristics:	AA 1-471
Origin:	Human
Source:	Wheat germ
Protein Type:	Recombinant
Purification tag / Conjugate:	This MLKL protein is labelled with GST tag.
Application:	ELISA, Western Blotting (WB), Affinity Purification (AP), Antibody Array (AA)

Product Details

Purpose:	MLKL (Human) Recombinant Protein (P01)
Sequence:	MENLKHIITL GQVIHKRCEE MKYCKKQCRR LGHRVLGLIK PLEMLQDQGK RSPVSEKLTT AMNRFKAALE EANGEIEKFS NRSNICRFLT ASQDKILFKD VNRKLSDVWK ELSLLLQVEQ RMPVSPISQG ASWAQEDQQD AEDRRRAFQM LRRDNEKIEA SLRRLEINMK EIKETLRQYL PPKCMQEIPQ EQIKEIKKEQ LSGSPWILLR ENEVSTLYKG EYHRAPVAIK VFKKLQAGSI AIVRQTFNKE IKTMKKFESP NILRIFGICI DETVTPPQFS IVMEYCELGT LRELLDREKD LTLGKRMVLV LGAARGLYRL HHSEAPELHG KIRSSNFLVT QGYQVKLAGF ELRKTQTSMS LGTTREKTDR VKSTAYLSPQ ELEDVFYQYD VKSEIYSFGI VLWEIATGDI PFQGCNSEKI RKLVAVKRQQ EPLGEDCPSE LREIIDECRA HDPSVRPSVD EILKKLSTFS K
Characteristics:	Human MLKL full-length ORF (NP_689862.1, 1 a.a. - 471 a.a.) recombinant protein with GST-tag at N-terminal.

Product Details

Purification: in vitro wheat germ expression system

Target Details

Target: MLKL

Alternative Name: MLKL ([MLKL Products](#))

Background: Gene: mixed lineage kinase domain-like
Synonyms: FLJ34389

Gene ID: 197259

NCBI Accession: [NM_152649](#)

Application Details

Application Notes: Optimal working dilution should be determined by the investigator.

Restrictions: For Research Use only

Handling

Buffer: 50 mM Tris-HCl, 10 mM reduced Glutathione, pH =8.0 in the elution buffer.

Handling Advice: Aliquot to avoid repeated freezing and thawing.

Storage: -80 °C

Storage Comment: Best use within three months from the date of receipt of this protein.

Images

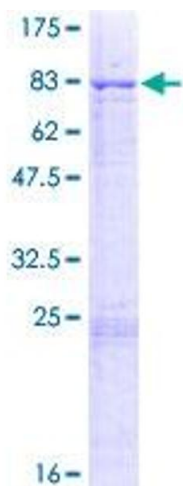


Image 1.