



[Go to Product page](#)

Datasheet for ABIN1311039

## MMAB Protein (AA 1-250) (GST tag)

### 1 Image

#### Overview

Quantity:	10 µg
Target:	MMAB
Protein Characteristics:	AA 1-250
Origin:	Human
Source:	Wheat germ
Protein Type:	Recombinant
Purification tag / Conjugate:	This MMAB protein is labelled with GST tag.
Application:	ELISA, Western Blotting (WB), Affinity Purification (AP), Antibody Array (AA)

#### Product Details

Purpose:	MMAB (Human) Recombinant Protein (P01)
Sequence:	MAVCGLGSRL GLGSRLGLRG CFGAARLLYP RFQSRGPQGV EDGDRPQPSS KTPRIPKIYT KTGDKGFSST FTGERRPKDD QVFEAVGTTD ELSSAIGFAL ELVTEKGHTF AEELQKIQCT LQDVGSALAT PCSSAREAHL KYTTFKAGPI LELEQWIDKY TSQLPPLTAF ILPSGGKISS ALHFCRAVCR RAERRVWPLV QMGETDANVA KFLNRLSDYL FTLARYAAMK EGNQEKIYMK NDPSAESEGL
Characteristics:	Human MMAB full-length ORF ( NP_443077.1, 1 a.a. - 250 a.a.) recombinant protein with GST-tag at N-terminal.
Purification:	in vitro wheat germ expression system

## Target Details

Target:	MMAB
Alternative Name:	MMAB ( <a href="#">MMAB Products</a> )
Background:	Full Gene Name: methylmalonic aciduria (cobalamin deficiency) cblB type Synonyms: ATR,MGC20496
Gene ID:	326625
NCBI Accession:	<a href="#">NM_052845</a>

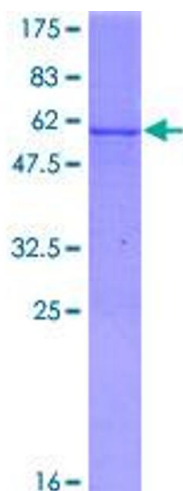
## Application Details

Application Notes:	Optimal working dilution should be determined by the investigator.
Comment:	Preparation method: in vitro, wheat germ expression system Product Quality tested by: 12.5% SDS-PAGE Stained with Coomassie Blue.
Restrictions:	For Research Use only

## Handling

Buffer:	50 mM Tris-HCl, 10 mM reduced Glutathione, pH =8.0 in the elution buffer.
Handling Advice:	Aliquot to avoid repeated freezing and thawing.
Storage:	-80 °C
Storage Comment:	Best use within three months from the date of receipt of this protein.

## Images



**Image 1.**