



[Go to Product page](#)

Datasheet for ABIN1311064

MMP12 Protein (AA 292-401) (GST tag)

1 Image

Overview

Quantity:	10 µg
Target:	MMP12
Protein Characteristics:	AA 292-401
Origin:	Human
Source:	Wheat germ
Protein Type:	Recombinant
Purification tag / Conjugate:	This MMP12 protein is labelled with GST tag.
Application:	Western Blotting (WB), ELISA, Affinity Purification (AP), Antibody Array (AA)

Product Details

Purpose:	MMP12 (Human) Recombinant Protein (Q01)
Sequence:	TTVGNKIFFF KDRFFWLKVS ERPKTSVNL I SSLWPTLPSG IEAAYEIEAR NQVFLFKDDK YWLISNLRPE PNYPKSIHSF GFPNFVKKID AAVFNPRFYR TYFFVDNQYW
Characteristics:	Human MMP12 partial ORF (NP_002417.2, 292 a.a. - 401 a.a.) recombinant protein with GST-tag at N-terminal.
Purification:	in vitro wheat germ expression system

Target Details

Target:	MMP12
Alternative Name:	MMP12 (MMP12 Products)

Target Details

Background:	Full Gene Name: matrix metalloproteinase 12 (macrophage elastase) Synonyms: HME,MGC138506,MME
Gene ID:	4321
NCBI Accession:	NM_002426

Application Details

Application Notes:	Optimal working dilution should be determined by the investigator.
Comment:	Preparation method: in vitro, wheat germ expression system Product Quality tested by: 12.5% SDS-PAGE Stained with Coomassie Blue.
Restrictions:	For Research Use only

Handling

Buffer:	50 mM Tris-HCl, 10 mM reduced Glutathione, pH =8.0 in the elution buffer.
Handling Advice:	Aliquot to avoid repeated freezing and thawing.
Storage:	-80 °C
Storage Comment:	Best use within three months from the date of receipt of this protein.

Images

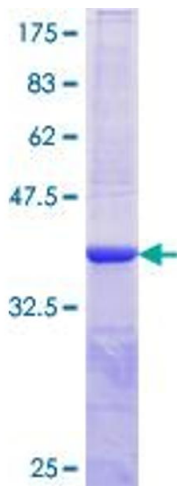


Image 1.