



[Go to Product page](#)

Datasheet for ABIN1311080

MMP26 Protein (AA 152-261) (GST tag)

1 Image

Overview

| | |
|-------------------------------|---|
| Quantity: | 10 µg |
| Target: | MMP26 |
| Protein Characteristics: | AA 152-261 |
| Origin: | Human |
| Source: | Wheat germ |
| Protein Type: | Recombinant |
| Purification tag / Conjugate: | This MMP26 protein is labelled with GST tag. |
| Application: | Western Blotting (WB), ELISA, Affinity Purification (AP), Antibody Array (AA) |

Product Details

| | |
|------------------|--|
| Purpose: | MMP26 (Human) Recombinant Protein (Q01) |
| Sequence: | SFWQWAHEDG WPFDGPGGIL GHAFLPNSGN PGVVHFDKNE HWSASDTGYN LFLVATHEIG HSLGLQHSGN QSSIMYPTYW YHDPRTFQLS ADDIQRQHL YGEKCSSDIP |
| Characteristics: | Human MMP26 partial ORF (NP_068573, 152 a.a. - 261 a.a.) recombinant protein with GST-tag at N-terminal. |
| Purification: | in vitro wheat germ expression system |

Target Details

| | |
|-------------------|--|
| Target: | MMP26 |
| Alternative Name: | MMP26 (MMP26 Products) |

Target Details

| | |
|-----------------|--|
| Background: | Full Gene Name: matrix metalloproteinase 26 Synonyms: MGC126590,MGC126592 |
| Gene ID: | 56547 |
| NCBI Accession: | NM_021801 |

Application Details

| | |
|--------------------|--|
| Application Notes: | Optimal working dilution should be determined by the investigator. |
| Comment: | Preparation method: in vitro, wheat germ expression system Product Quality tested by: 12.5% SDS-PAGE Stained with Coomassie Blue. |
| Restrictions: | For Research Use only |

Handling

| | |
|------------------|---|
| Buffer: | 50 mM Tris-HCl, 10 mM reduced Glutathione, pH =8.0 in the elution buffer. |
| Handling Advice: | Aliquot to avoid repeated freezing and thawing. |
| Storage: | -80 °C |
| Storage Comment: | Best use within three months from the date of receipt of this protein. |

Images

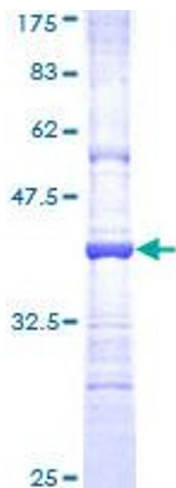


Image 1.